

Boundary Alarm System

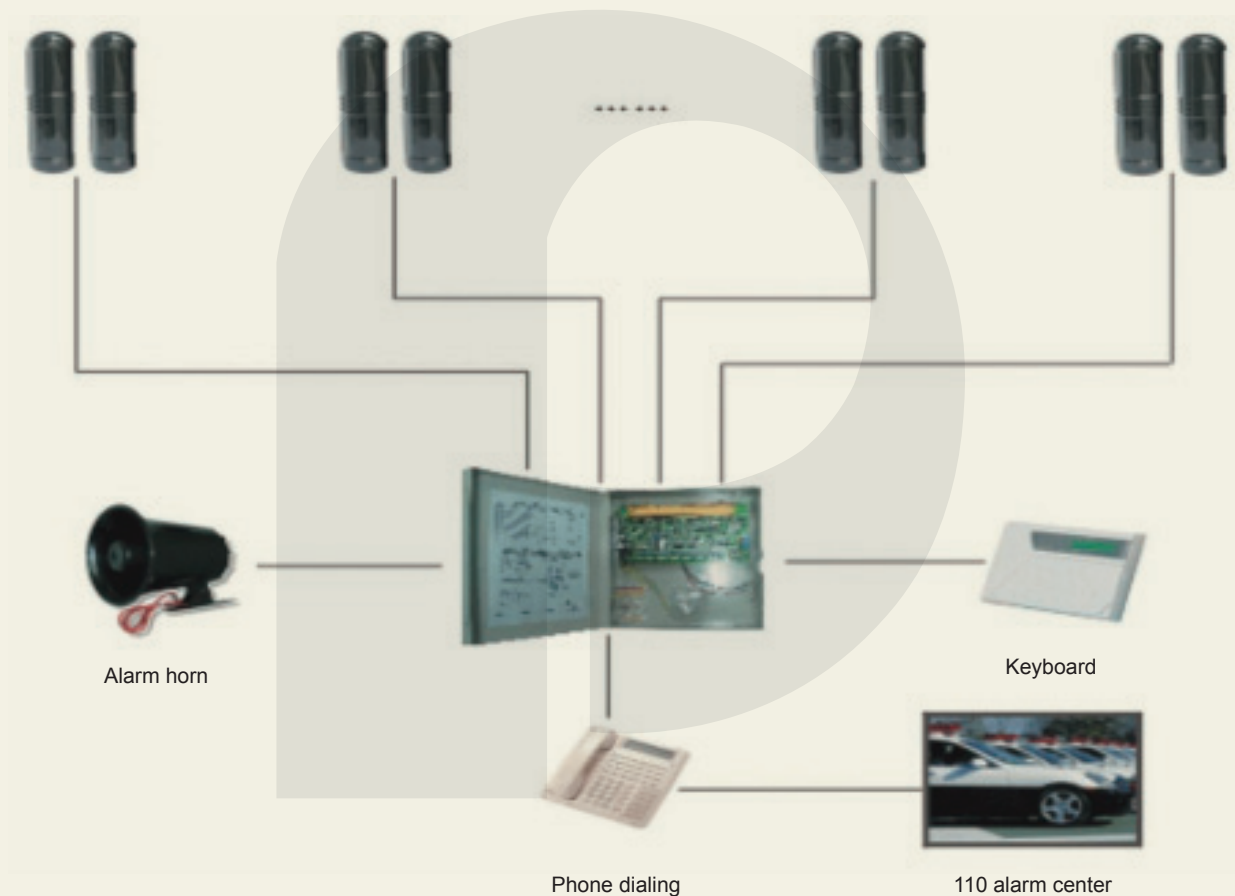


Boundary Alarm System

Boundary Alarm System mainly aims at boundary around closed outdoor site.

► System Description

Boundary Alarm System utilizes modern high-tech equipment to monitor and protect surrounded area against unauthorized intrusion and trespassing. Once illegal event is detected, alarm would be raised immediately.



► Main Functions of the System

- 24-hour monitoring of boundary situation to provide early warning signal for boundary breach
- Able to divide the whole boundary into several sections to improve alarm rate
- High environment suitability, easy implementation, without dead zone, dead corner and blank area
- Exception alarm
- Alarm interface to link with other system



Boundary Alarm System



Tension Fence

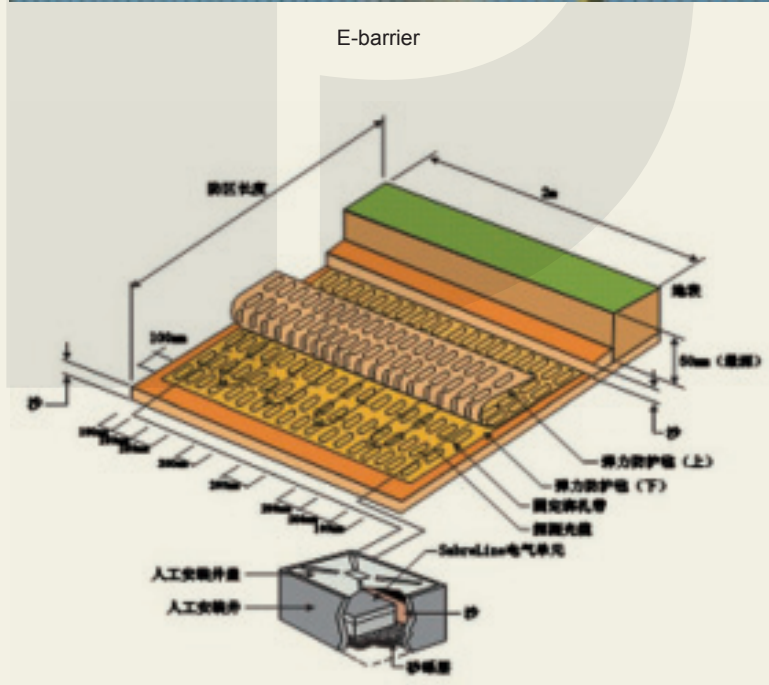


Opposite Infrared Probe

► Main Equipment



E-barrier



Underground Vibration Optical Cable

Security Inspection System

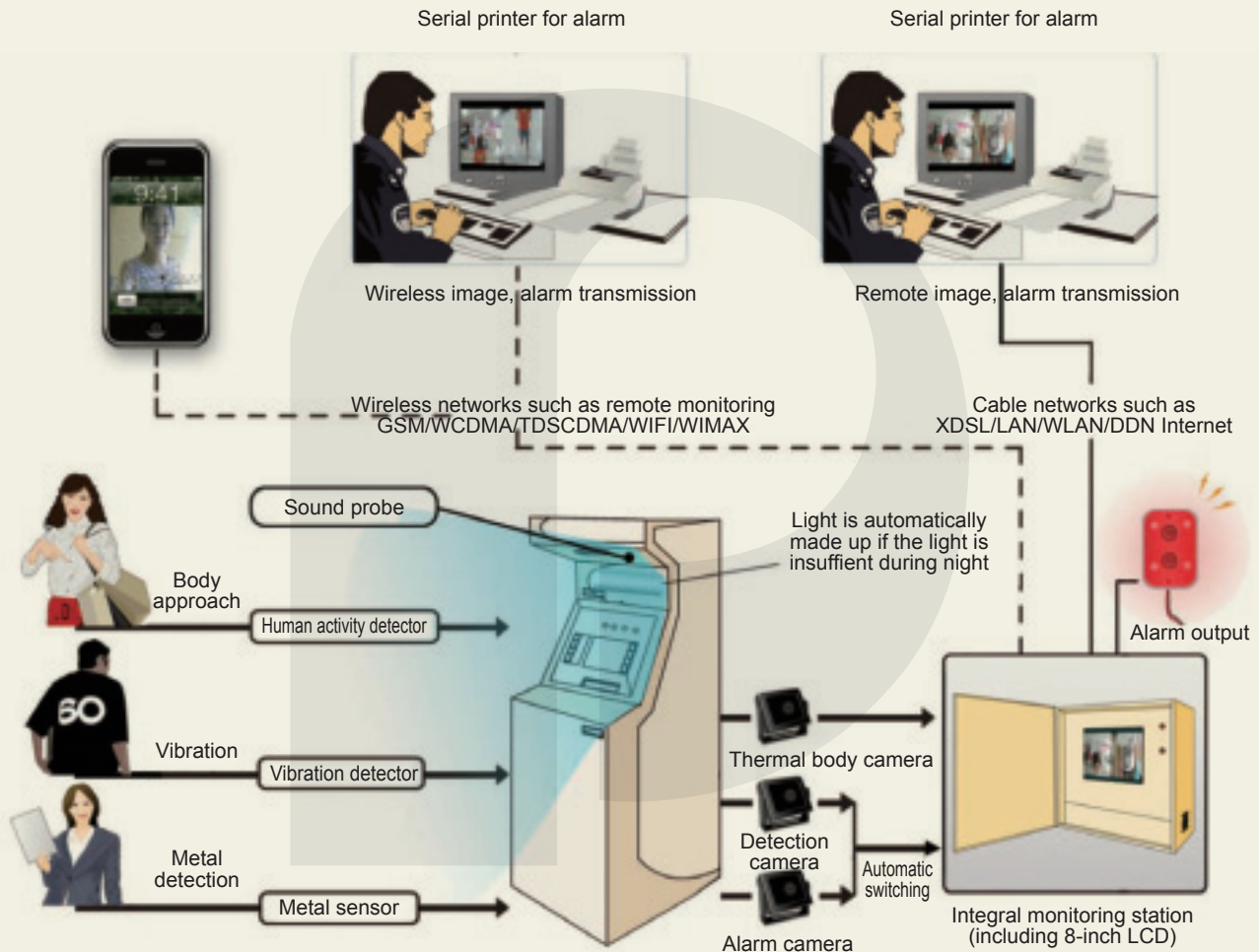


Security Inspection System

The Security Inspection System is mainly used for security inspection at entrances and exits of transportation hubs, customs, critical material storages, etc.

► System Description

The system carries out safety inspection for persons and vehicles entering and leaving the area by means of combined X-ray testing, metal detection and explosives detection.



► Main Functions of the System

- Fast detection of drugs and explosives
- Analysis of all types of explosives
- Highly sensitive metal detection
- Alarm prompt in case of suspicious situations



Security Inspection System

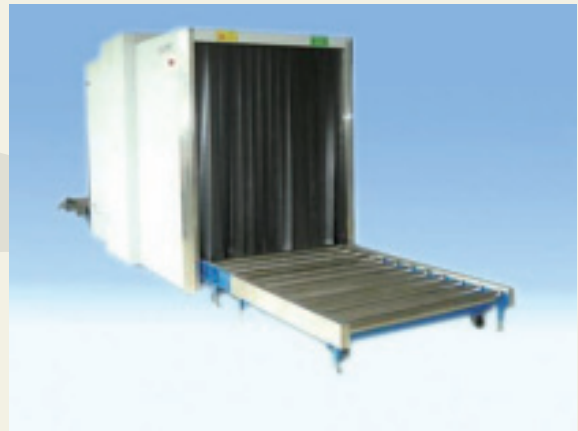
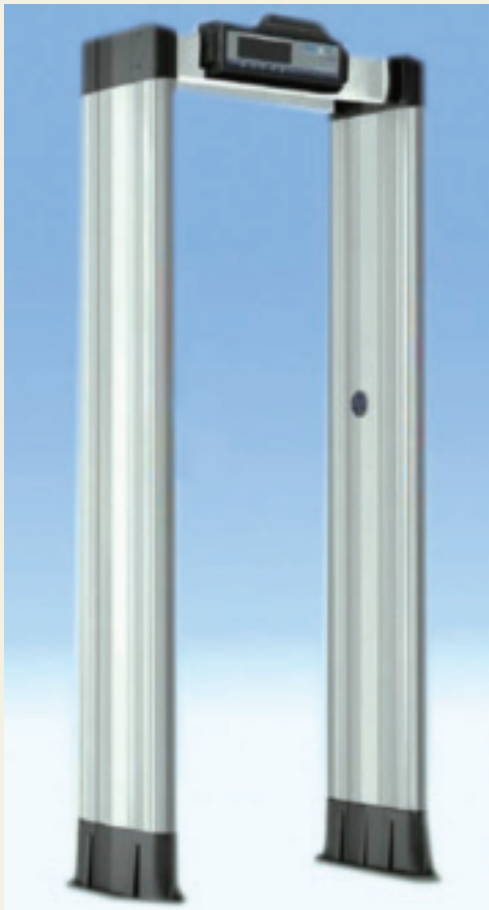


Hand-held explosive detector



Hand-held metal detector

► Main Equipment



Access Control System

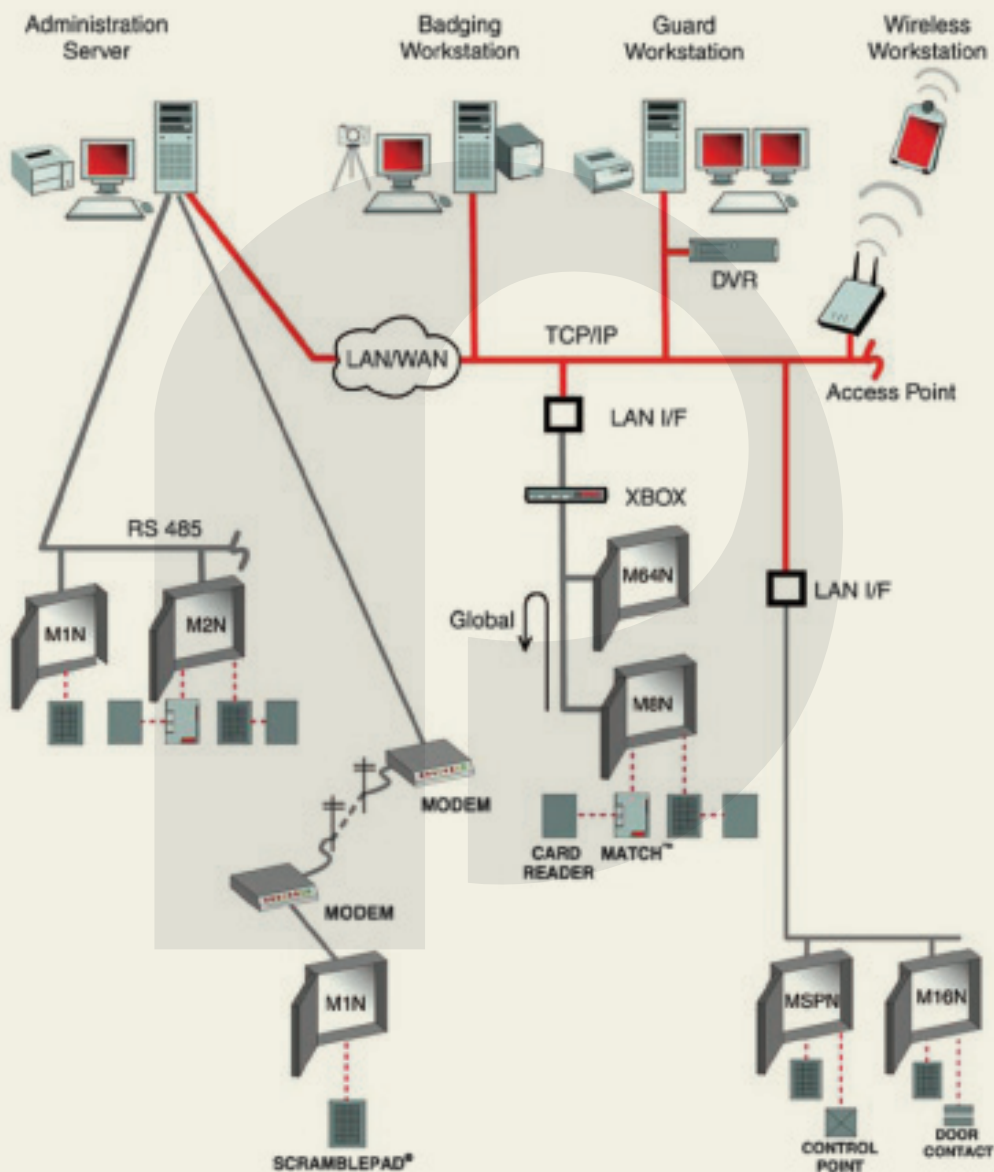


Access Control System

The Access Control System is mainly used in places where higher level of security is required such as buildings and important areas.

► System Description

The Access Control System is an entry and exit management system controlling persons passing in and out of main gate.



► Main Functions of the System

- Access privilege management
- Real-time monitoring of entry and exit events, as well as access door status
- Inquiry for access records
- Abnormal event alarm
- Anti-return function
- Anti-tailing feature
- Logic opening (rules for reading card by double persons or more)



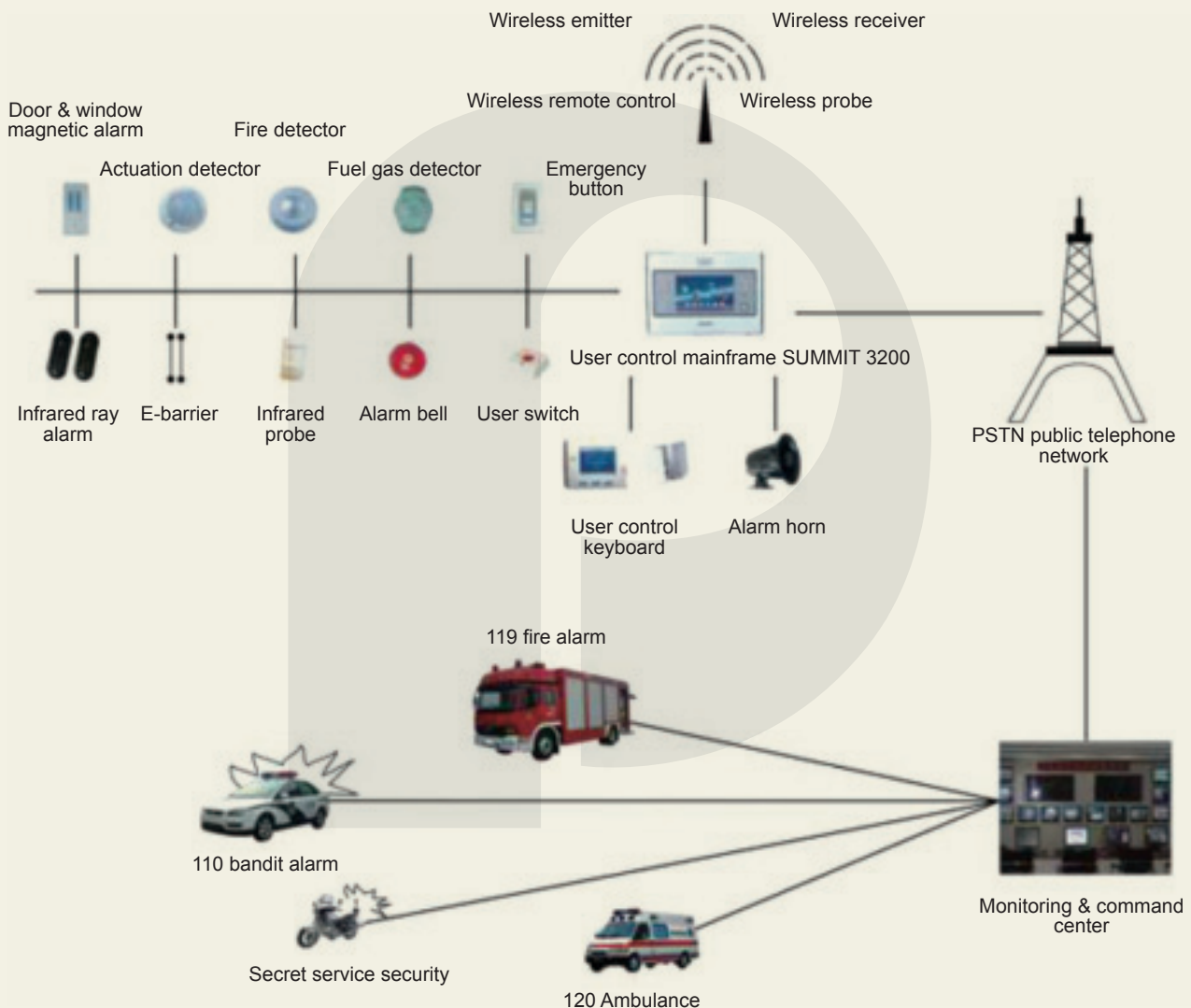
Anti-theft Alarm System



Anti-theft Alarm System

► System Description

Anti-theft Alarm System is designed to provide omni-directional monitoring of enclosed area with high security level. The system employs acoustic, optical, magnetic and microwave means to detect and report unauthorized trespassing and intrusion events.



► Main Functions of the System

- Perimetry setup and cancellation, easy user service
- Multiple monitoring means, low false alarm rate, strong anti-jamming capability
- Alarm interface for interconnection with other system
- Able to send alarm information with email or short message for immediate alarm notification



Guard Against Theft Alarm System



Glass break detector

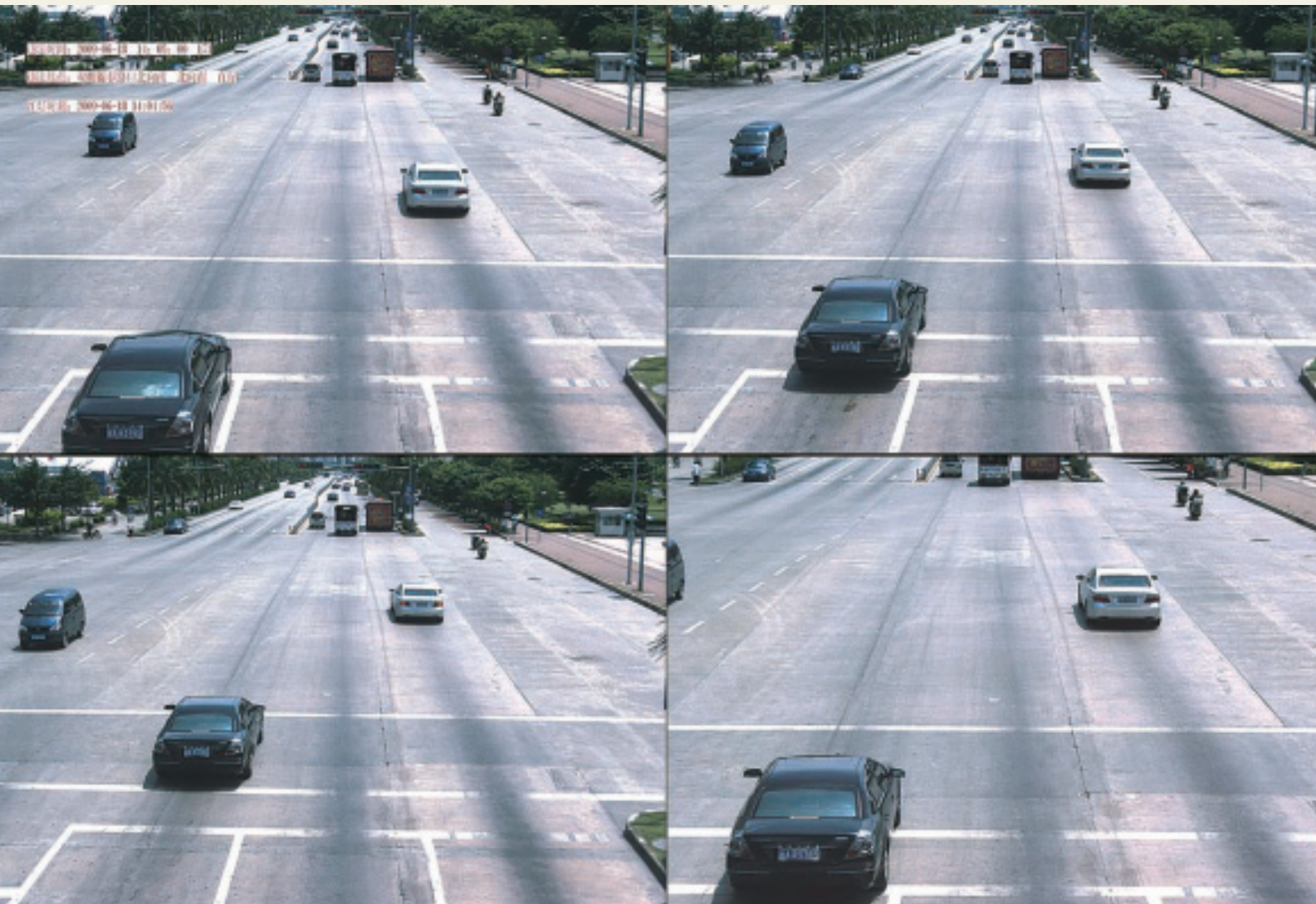


Ceiling microwave-PIR dual-mode
detector

► Main Equipment



E-police System

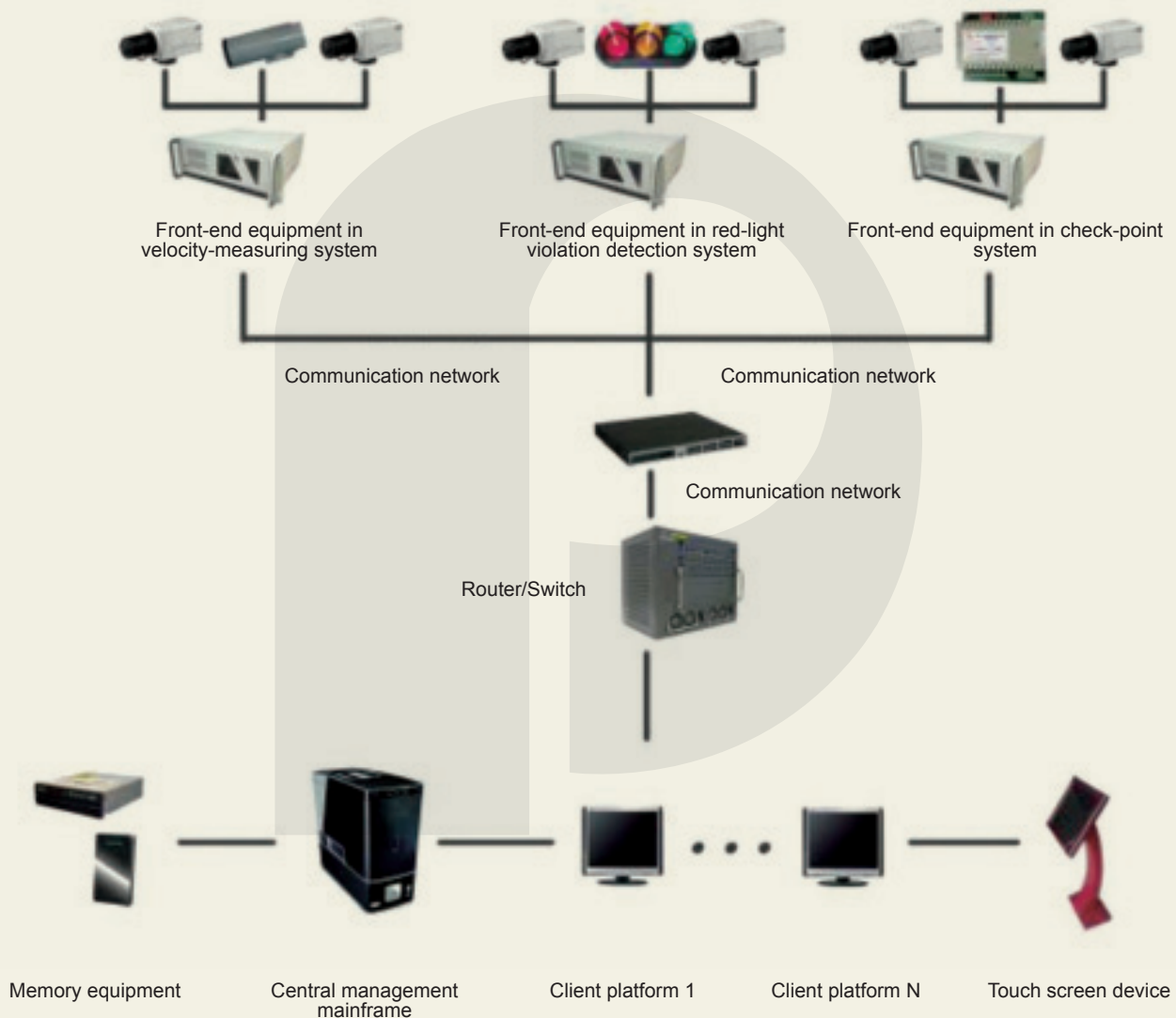


E-police System

E-police System is mainly used for all-weather traffic monitoring and management aiming at intersections, road sections and traffic security check-points.

► System Description

E-police System employs optical, digital and video imaging technologies to automatically monitor and report traffic violation of the driver.



► Main Functions of the System

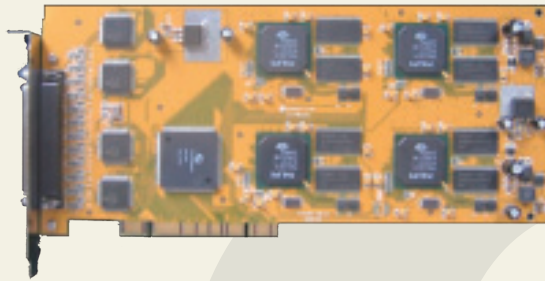
- Monitoring and reporting of moving and non-moving traffic violation on road.
- Monitoring, detecting and tracking of suspected vehicle.
- Real-time acquisition and processing of road traffic information (vehicle velocity, traffic flow and density, etc.)
- License plate identification



E-police System



► Main Equipment



Video capture card



HD video camera



Industrial personal computer

Video Monitoring System

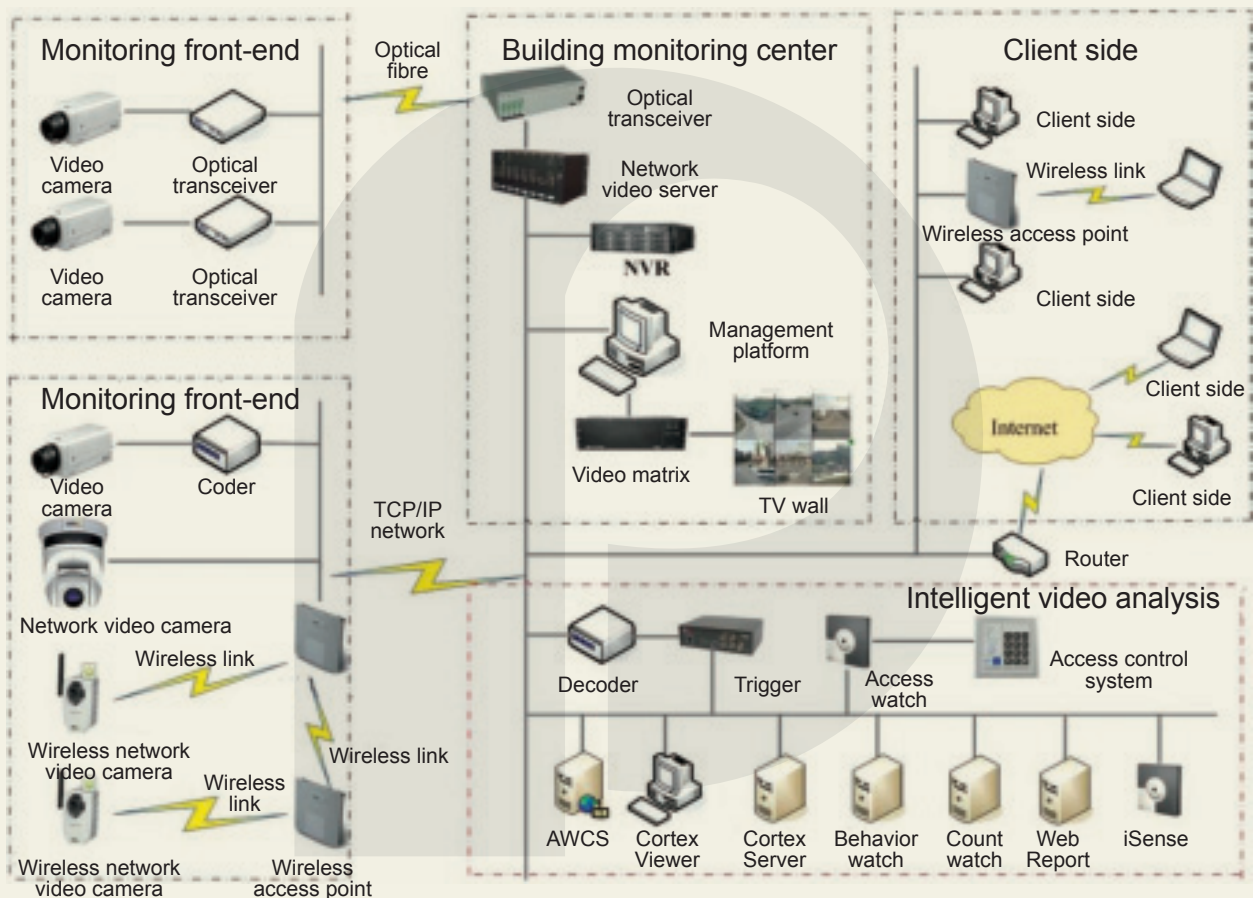


Video Monitoring System

Video Monitoring System is widely applied at important sectors and sites of various industries

► System Description

Video Monitoring System consists of front-end sensor devices, middle ware and transmission section, control unit and rear-end display and recording unit.



► Main Functions of the System

- Real-time audio-video monitoring
- Monitoring history inquiry and playback
- Camera holder and shooting control
- Alarm access of other system and linked control



Video Monitoring System



Integrated spherical camera



Color gun-type camera

► Main Equipment



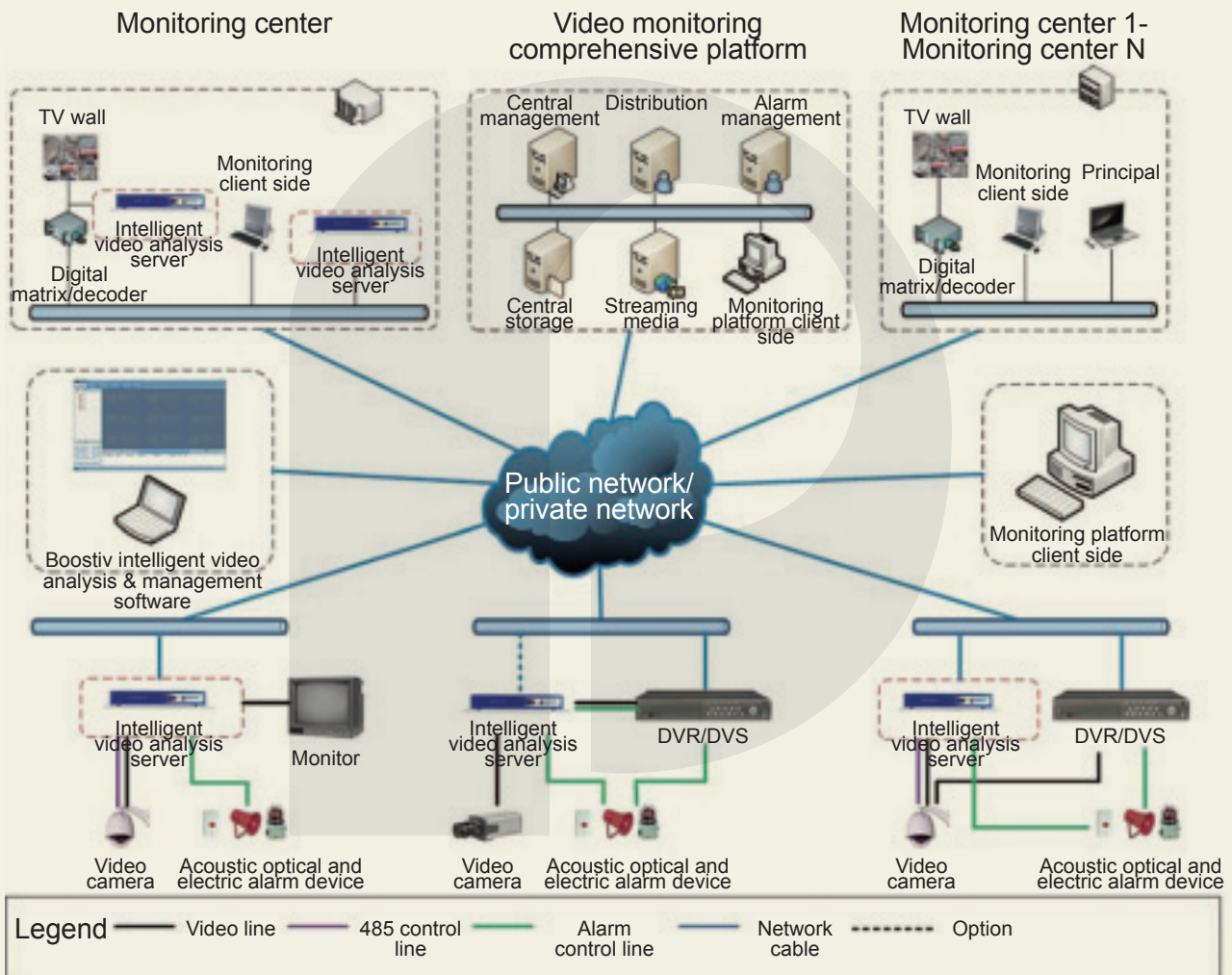
Intelligent Video Analysis System



Intelligent Video Analysis System

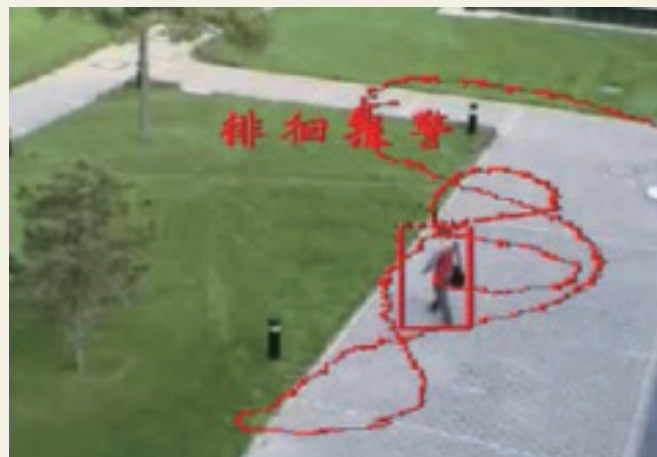
► System Description

Intelligent Video Analysis System utilizes computer vision, artificial intelligence biometrics and other technology to analyze video images. The system provides facilities to extract useful images and information on the road, inside gambling house, supermarket and closed area under monitoring.

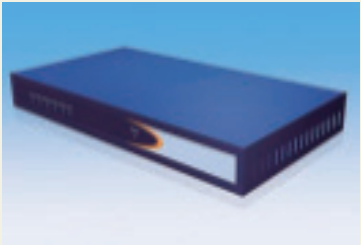


► Main Functions of the System

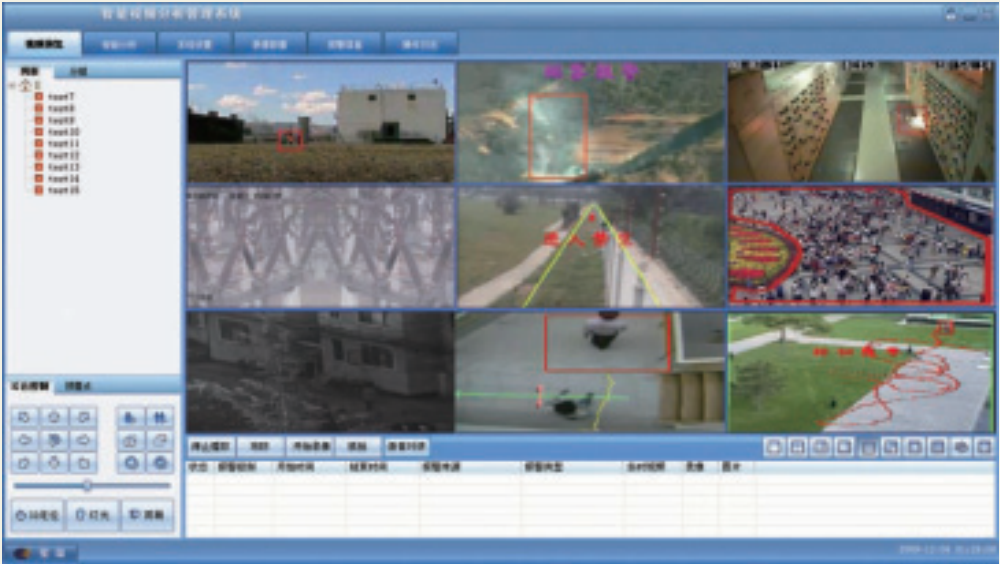
- Cross-guard line alarm
- People counting
- People density detection
- Article left-over suspicious object implant
- Illegal parking
- People tracking



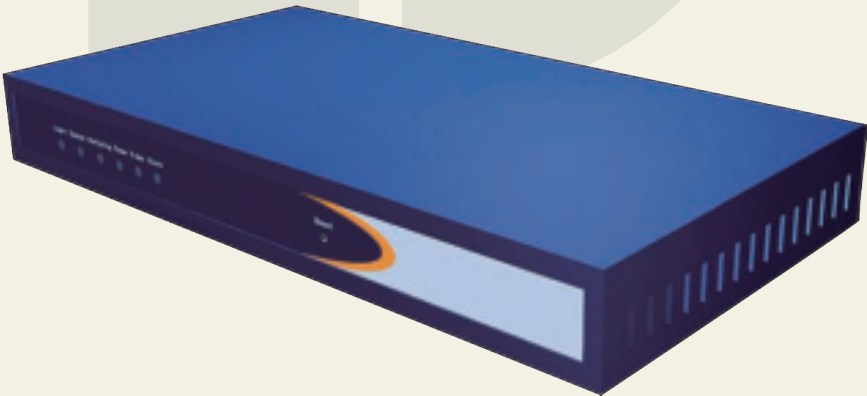
Intelligent Video Analysis System



► Main Equipment



Intelligent analysis software



Intelligent analysis server

Visitor Management System

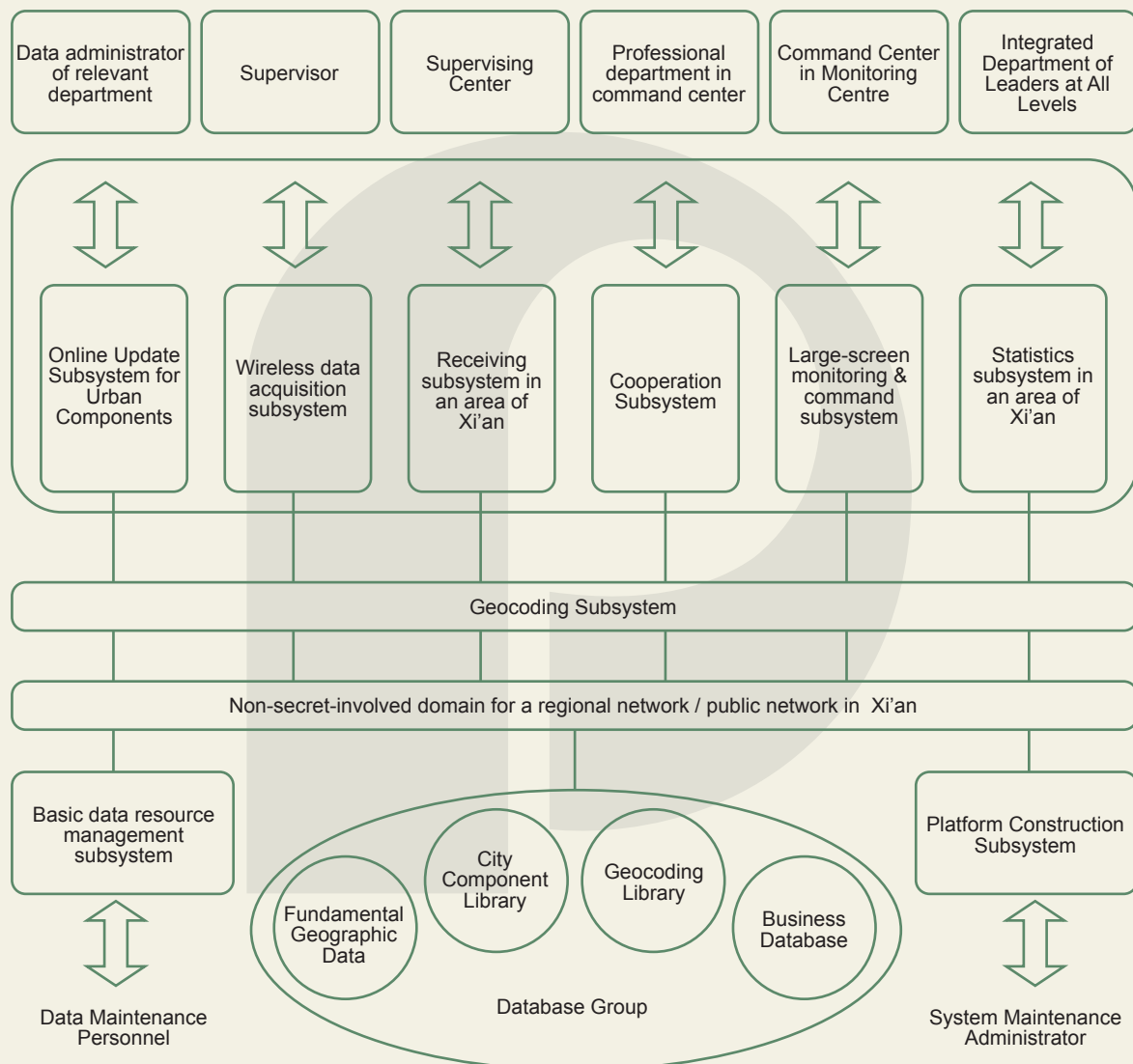


Visitor Management System

The Visitor Management Systems (VMS) are mainly used in organizations for which visitors are frequent, such as government agencies and institutions at all levels, enterprise and public institutions, colleges and specialized schools.

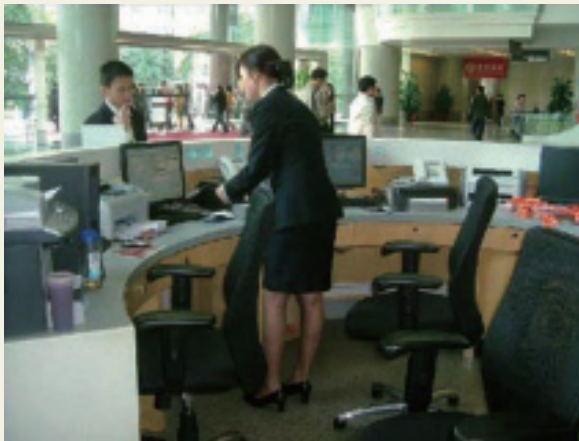
► System Description

The Visitor Management Systems (VMS) is a set of information registration system used for management of outside visitors and internal personnel who enter and leave access controlled area.



► Main Functions of the System

- Ability to issue temporary cards for visitors
- Support the second-generation ID card recognition, optical recognition of first-generation ID card and passports
- Taking photographs of visitors, making entry and exit comparison
- Frequent visitor registration, blacklist check and appointment management



Visitor Management System



Entrance Machine



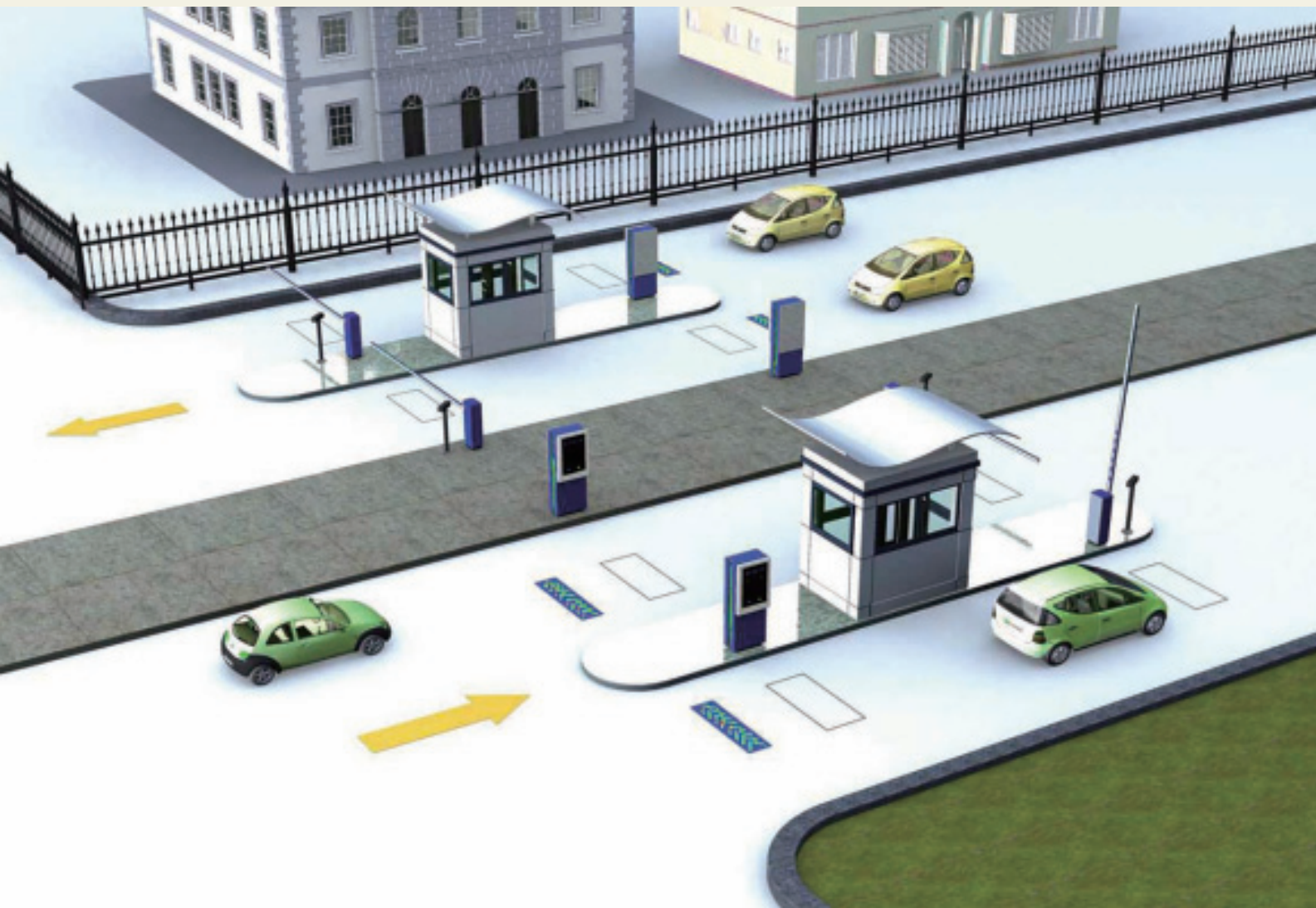
Revolving Door

► Main Equipment



Visitor Management Machine

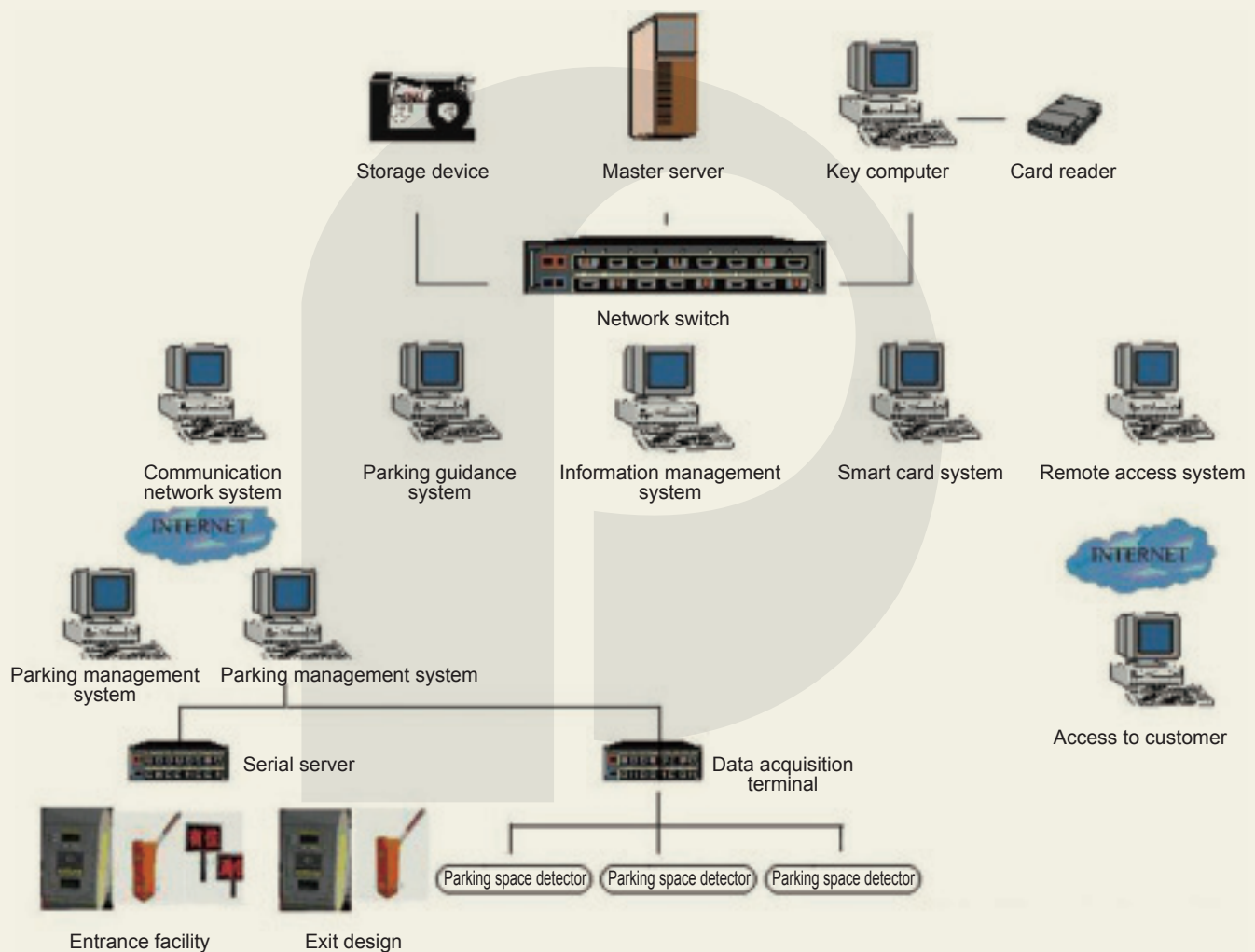
Vehicle Management System



Vehicle Management System

► System Description

Vehicle Management System is mainly used at vehicle entrance and exit of an enclosed area. It provides entry and exit management system controlling the vehicles passing in and out of security gate.

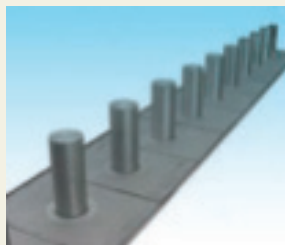


► Main Functions of the System

- Flexible operation, adaptive to different management modes
- System scale can be extended arbitrarily
- Inquiry for entry and exit record
- Vehicle license plate recognition at entry and exit
- Image comparison function to prevent vehicle theft
- Flexible and diversified data statistics



Vehicle Management System



Hydraulic Lifting Barrier Device 1



Hydraulic Lifting Barrier Device 2

► Main Equipment



FDJ-018



FDJ-019



Teleconference System

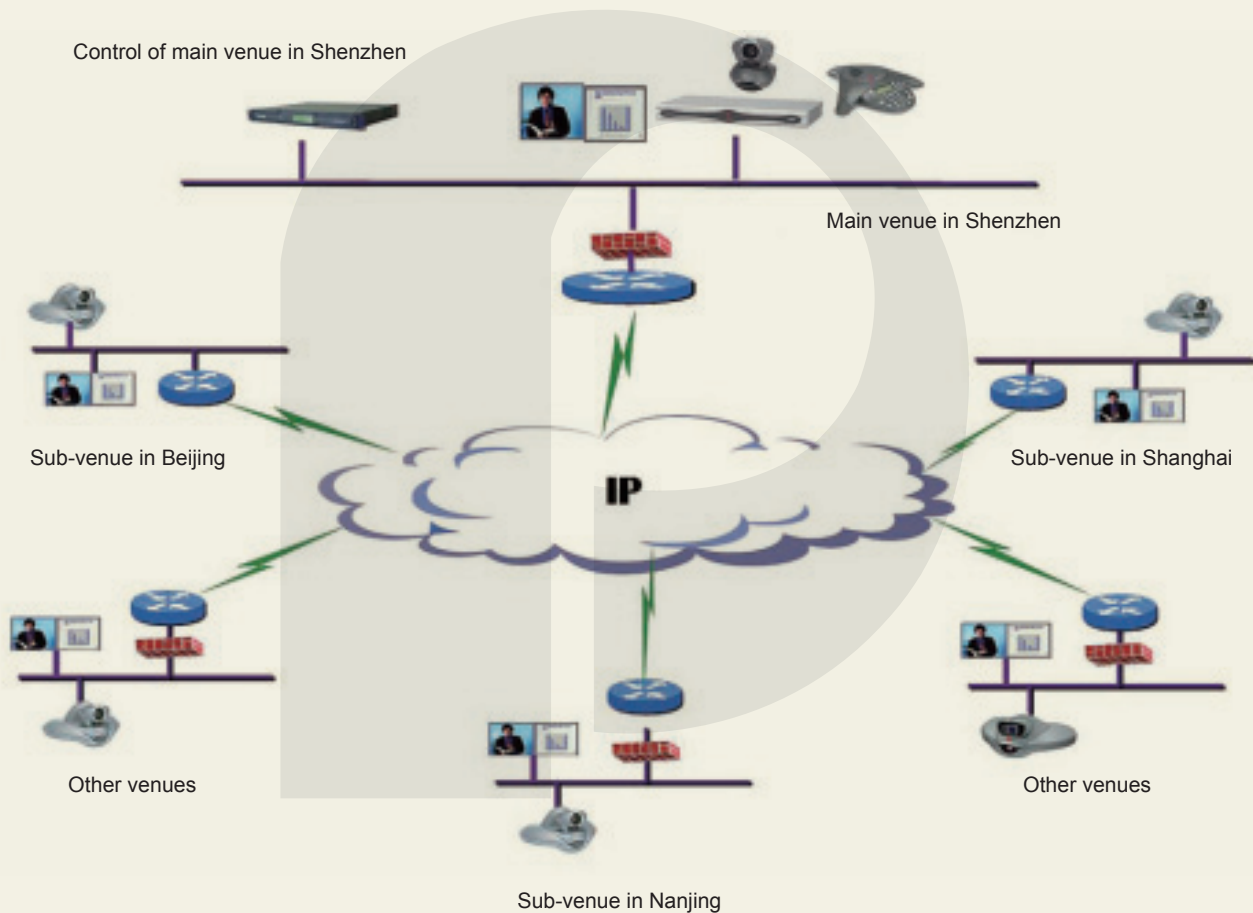


Teleconference System

The Teleconference System is mainly used for in-house communication and training, inter-business communication, customer relations communication, as well as industries such as medical, education, energy, finance, technology and so on.

► System Description

The Teleconference System is an image communication system that connects a conference room in one place to other venues in other places in with broadband communication lines and audio-visual facilities, including microphone, TV cameras and codec modules.



► Main Functions of the System

- Real-time audio and video broadcasting
- Multistage architecture, freely connecting and networking among venues
- Electronic whiteboard
- Conference voting system
- Simultaneous interpretation function
- History query function, enabling retrieval and replay of previous conference record data



Teleconference System



Voting Unit



High-definition Video Camera

► Main Equipment

