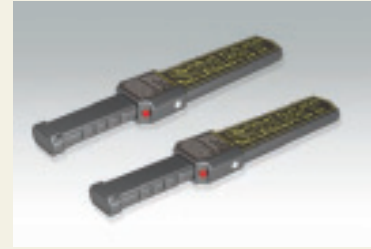


Hand-held Metal Detector



Hand-held Metal Detector



▶ General Description

Hand-held Metal Detector is used to check persons, hand luggage, mail and parcel consignments to detect IDE device, weapon, weapon components, ammunition, explosives in metal covers, etc. It is also can locate hidden objects in camouflaged place such as walls, wainscoting, hollow spaces and underground. It is RoHS-compliant and carries CE approvals.

▶ Usages

- Airport, bus station, and harbor electronic checking;
- Custom, police, frontier defense, prison, gold mine and defense department security checking;
- Medicine, food, commercial and quality checking;
- VIP areas and stadium security checking.

▶ Main Features

- High sensitivity;
- Can be folded for easy carrying;
- Low power consumption, one DC 9V IEC 6F22 battery can last for 48 hours;
- Automatic low voltage alarm;
- Audio and visual indication.

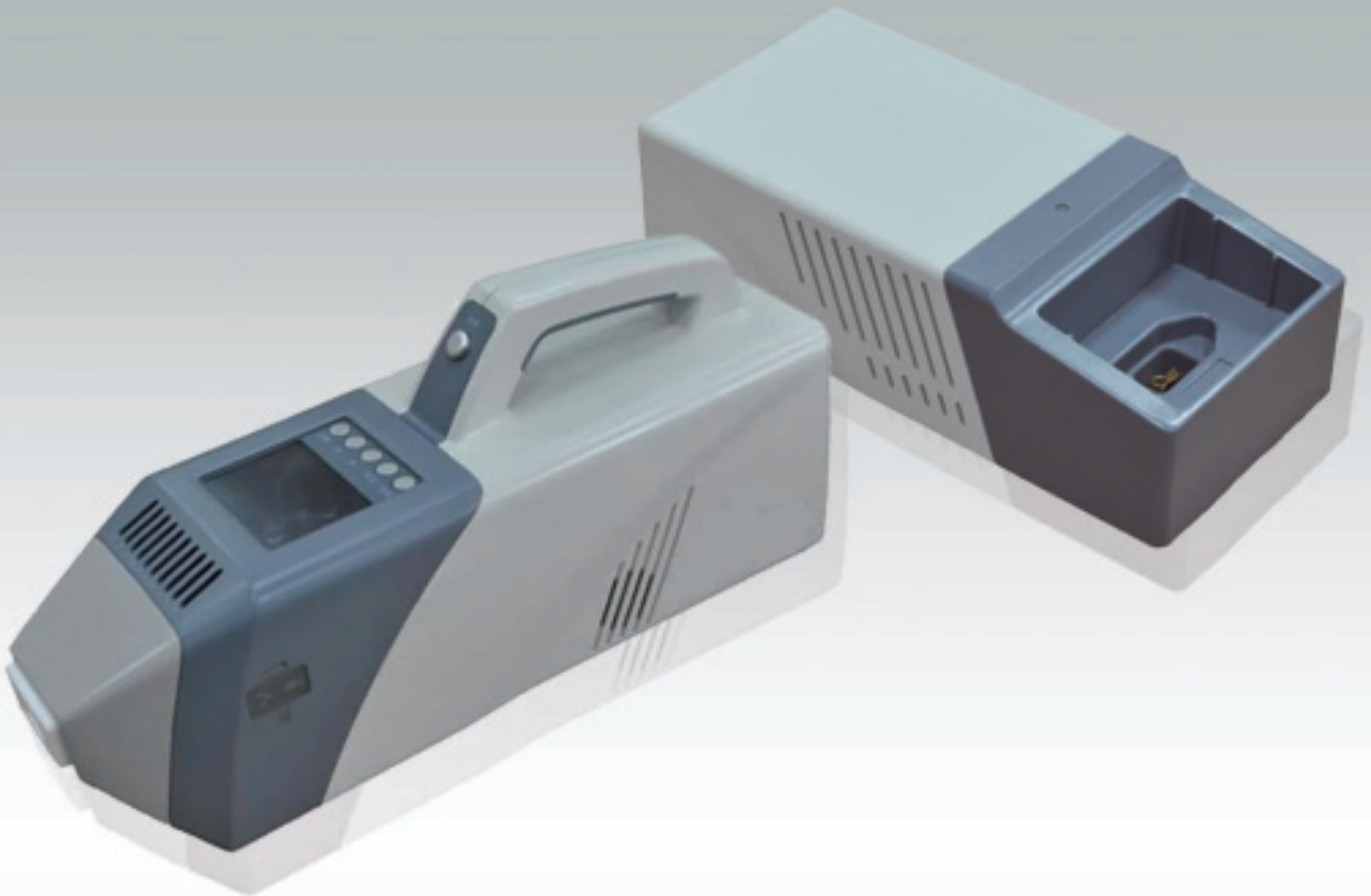
▶ Principal Data

	EMD28	MD68
<u>Detection Depth</u>		80 mm for one cent coin
One Yuan Coin (RMB)	70 mm	
Iron Pipe-tube in $\Phi 20$ mm	120 mm	
Dagger	110 mm	
<u>Power Supply</u>	1 pcs of 9V battery	1 pc of 9 V battery
<u>Current Consumption</u>	< 3 m A	15 mA
<u>Operation Temperature</u>	-10 ~ +50 $^{\circ}$ C	-15 ~ +40 $^{\circ}$ C
<u>Length</u>	395 mm (operation); 260 mm (storage)	440 mm x 80 mm x 35mm
<u>Diameter of Search Head</u>	$\Phi 140$ mm	
<u>Weight</u>	230 g (without battery)	410 g

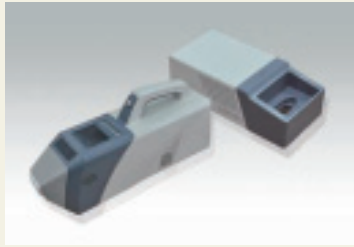
**Security
Screening**

AJ0002

Portable Drugs Detector SOSENSE-D1



Portable Drugs Detector SOSENSE-D1



▶ General Description

The SOSENSE-D1 Portable Drug Detector is the latest generation portable Drugs detecting device that adopts pseudo random sequence Ion Mobility Spectrometry and Hardmard algorithm. It is the first product that adopts this technology in the world, which improves SNR and anti-jamming capacity greatly as well as suppresses false alarm rate efficiently.

SOSENSE-D1 detector features ergonomic design that allows easy operation. It integrates special sample-taking pen that prevent the test paper from being contaminated by operator. It has English menu, color display, convenient removable quick charging battery and storage for 5,000 alarm records. The network and USB ports allows sample data input and internal connecting.

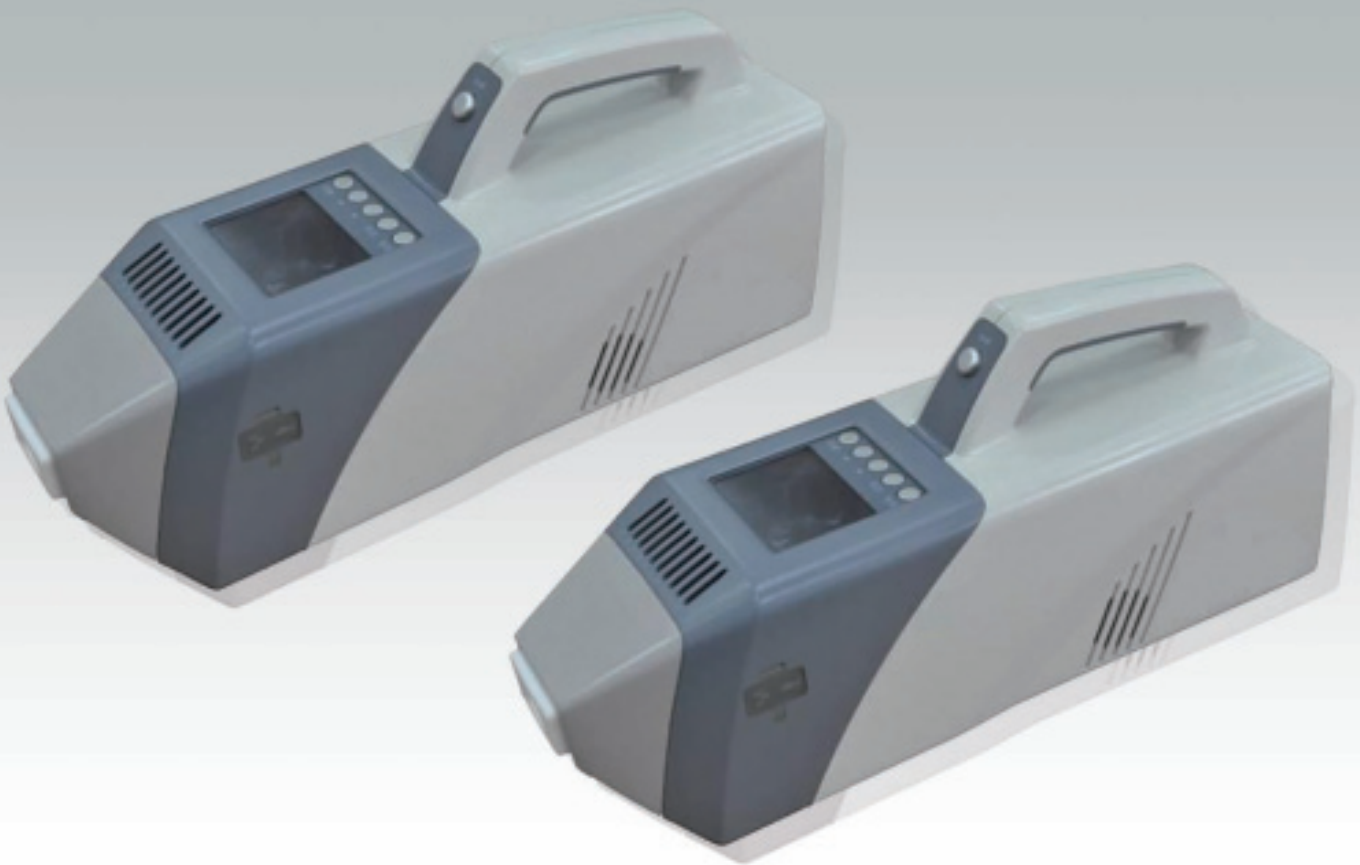
▶ Main Features

- Independent Research and Development
- Patented Technologies: pseudo random sequence Ion Mobility Spectrometry and Hardmard algorithm
- Special Feature: can show the name of explosives on LCD display.
- Storage of Records: 2000
- Renewable Database and Operation Program
- External USB and Network Port
- Special Sampling Pen: avoid test paper contamination
- Sample Collection: sniff collection and wipe collection
- English Menu
- Small Size and Light Weight

▶ Principal Data

<u>Technology</u>	Ion Mobility Spectrometry, hardmard transfer
<u>Detecting Capability</u>	heroin, cocaine, cannabis, methamphetamine, morphine, ketamine, opium, ecstasy (MDA, MDMA), THC, DHE etc. (the drugs database can be updated for new drugs)
<u>Sensitivity</u>	10^{-8} g
<u>False Alarm Rate</u>	1%
<u>Sampling Mode</u>	air sample collection of vapour particle and surface wipe of trace particle
<u>Warm-up Time</u>	10 minutes
<u>Analysis Time</u>	4 ~ 10 s
<u>Calibration Time</u>	30 s
<u>Alarm Mode</u>	buzzer and visual display in english
<u>Dimension</u>	435 × 133 × 210 mm
<u>Weight</u>	4.6 kg (including battery)
<u>Power Supply</u>	AC 220 V or Li-battery
<u>Temperature</u>	-20 ~ 55 C
<u>Working Humidity</u>	Relative Humidity 99%
<u>Display</u>	chinese and english menu, 3.5 inches TFT color screen
<u>Connector</u>	net-port or USB-port

Portable Explosive Detector AY-0502



Portable Explosive Detector AY-0502



▶ General Description

The AY-0502 Portable Explosive Detector is the latest generation portable explosive detecting device that adopts pseudo random sequence Ion Mobility Spectrometry and Hardmard algorithm. It is the first product that adopts this technology in the world. The AY-0502 Portable Explosive Detector features ergonomical design for easy operation. The sampling pen has special feature to prevent sample contamination, improve its SNR and anti-jamming capacity greatly as well as reduce false alarm rate efficiently.

The operation of this device is convenient and the special sample-taking pen can prevent the test paper from being contaminated by operator. It has English menu, color display, convenient removable quick charging battery and storage for 5000 alarm records. The network and USB ports allow sample data input and Internet connection.

▶ Main Features

- Independent Research and Development
- Patented Technologies: pseudo random sequence Ion Mobility Spectrometry and Hardmard algorithm
- Special Feature: can show the name of explosives on LCD screen.
- Storage of Records: 5,000
- Renewable Database and Operation Program
- External USB and Network Port
- Special Sampling Pen: avoid test paper contamination
- Sample Collection: sniff collection and wipe collection
- English Menu
- Small Size and Light Weight

▶ Principal Data

<u>Technology</u>	Ion Mobility Spectrometry, Hardmard Transfer
<u>Detecting Capability</u>	Black Powders, Ammonium Nitrate (AN), TNT, AN-TNT, RDX, PETN, HMX, Tetryl, C4, TATP, SEMTEX etc. (the explosive database can be updated for new explosive)
<u>Sensitivity</u>	10 ⁻⁹ g
<u>False Alarm Rate</u>	1%
<u>Sampling Mode</u>	air sample collection of vapour particle and surface wipe of trace particle
<u>Warm-up Time</u>	10 minutes
<u>Analysis Time</u>	4 ~ 10 s
<u>Calibration Time</u>	30 s
<u>Alarm Mode</u>	buzzer and visual display in english
<u>Dimension</u>	430 × 113 × 205 mm
<u>Weight</u>	4.0 kg (including battery)
<u>Power Supply</u>	DC or AC 220 V @ 50/60 Hz
<u>Temperature</u>	-20 ~ +55 °C
<u>Working Humidity</u>	Relative Humidity 95%
<u>Display</u>	English Menu, 3.5 inches TFT color screen
<u>Connector</u>	Net-port or USB-port

Hazardous Liquid Detector



Hazardous Liquid Detector



► General Description

Suitable for the detection of more than 20 hazardous flammable liquids such as alcohol, gasoline, ether, acetone, nitroglycerine and so on.

It can identify inflammable and explosive hazardous liquids in short time. The security screening can be performed without opening suspected liquid container.

► Advantages

- Compact size and light weight.
- Detection without opening bottles to get high efficiency and immediate results.
- Power supply by two AA batteries, allowing continuous operation of 4 hours.

► Usages

- Entrance inspection for important meetings.
- Entrance inspection for government buildings.
- Security inspection at airport.
- Security inspection for public transportation vehicle.
- Security inspection for rail transportation.

► Principal Data

Dimensions

Detected Object

Application Environment

Weight

Batteries

132 × 67 × 22 mm

alcohol, gasoline, ethers, ketones and other hazardous liquids

fluid in non-metallic regular bottle

about 0.16 kg

2 AA batteries

Nonlinear Junction Detector



Nonlinear Junction Detector



► General Description

This device adopts the most advanced non-linear nodes technology to detect hidden electronic device. By analyzing the received Harmonics II and III, the device can distinguish electronic devices (including semiconductor devices), and identify the "wrong" node connection metal and other oxides. The device has reached world advanced level in the field of detection penetration with the most advanced manual installation and regulation system design. Detection rate can be regulated with one hand and the other hand prevents switch error and wrong operations caused by inadequate power transmission, as well as preventing electronic components from being damaged caused by high power transmission.

► Main Features

- Deep Penetration Detection, can detect the existence of electronic detonation devices with thickness upto 75 cm, such as underneath sofa and concrete.
- Wide Zone Detection, can detect all kinds of radio equipments with low frequency to high frequency, and very low frequency electronic devices which can not be detected by other equipments.
- Manual power adjustment function can prevent switching errors and wrong operation of electronic devices caused by wrong power transmission.
- Visual and audio alarm.
- Adjustable modulation mode of detection signal to obtain better results.

► Principal Data

The Format of Detected Signal

pulse mode

Receiver Sensitivity

-100 dBW

Frequency of Transmitter

920 MHz

Frequency of Receiver

1840, 2760 MHz

Power

8 W

Power Supply

28 V Battery

Weight

9.5 kg

Packaging Box Size

72 × 46 × 26 cm

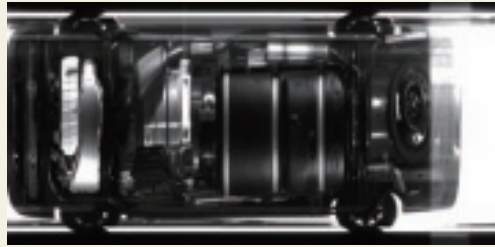
Packaging

special outdoor packaging: waterproof, shockproof

Under Vehicle Surveillance System



Under Vehicle Surveillance System



▶ General Description

Under Vehicle Surveillance System adopts the second-generation image scanning technology. It can scan vehicle chassis at the maximum passing speed of 70 km/h. With the help of high resolution image, the system is able to identify illegal modifications and suspicious objects under vehicle chassis.

▶ Main Features

- Second-generation image scanning technology
- High-resolution imaging devices
- Compact system, simple operation without special desktop computer and vehicle
- Stores black and white image to library, which facilitates information query on historical vehicles records

▶ Application Environments

- Large meeting places
- Border vehicle check points
- Important buildings
- Toll stations
- Airport vehicle entrance

▶ Principal Data

<u>Overall Dimensions</u>	550 × 350 × 95 mm
<u>Vertical Resolution</u>	2,048 pix
<u>Lighting</u>	55 W Bright Halogen × 2
<u>Protection Rate</u>	IP55
<u>Control Terminal Dimensions</u>	660 × 335 × 55 mm
<u>Weight</u>	~ 15 kg
<u>Field of View</u>	175°
<u>Vehicles Passing Speed</u>	1 ~ 70 km/h
<u>Image Correction</u>	automatic correction of brightness and image pre-distortion
<u>Control Terminal Weight</u>	~ 8 kg

HWA009-LCD-1

Walk-Through Metal Detector



HWA009-LCD-1

Walk-Through Metal
Detector



► Principal Data

<u>Power Supply</u>	AC 100 V-240 V 50 Hz-60 Hz
<u>Power</u>	< 35 W
<u>External Dimension</u>	2200 mm (H) × 800 mm (W) × 500 mm (D)
<u>Channel Dimension</u>	2010 mm (H) × 700 mm (W) × 500 mm (D)
<u>Available Colors</u>	black, white, dark blue
<u>Total Weight</u>	~ 70 kg
<u>Working Temp.</u>	-20 ~ +45 °C

► Main Features

- **Operation Mode:** panel number key; infrared remote control; computer long distance network interface.
- **LCD Display:** English menu;
- **Detection Zone:** multi-overlapping detection zone, utilize network structure and single frequency motivation detecting technology to cover weak area and blind area. High sensitivity and stable performance.
- **Alarms:** sound and light alarm
- **Zone Sensitivity:** can detect a clip sized metal piece at the highest sensitivity level. Sensitivity level from 0 to 255.
- **Material:** PVC composite material, waterproof and dampproof;
- **Intelligent Statistics:** can automatically count the number of people passing through and alarm rate.
- **High Capacity of Resisting Disturbance:** use digital, analog and right-left balance technology to prevent false alarm or alarm failure.
- **Security Protection:** double password. continuous power supply for constant password protection is not required.
- **Electromagnetic Radiation:** Meet EMC electromagnetic radiation standard, no harm to cardiac pacemaker carrier, pregnant woman, floppy disk, film, video tape, etc.
- **Installation:** Integrated design, only needs 20 seconds to install and disassemble.

HWMD-CCTV Video

Type Walk-Through Metal Detector



HWMD-CCTV Video Type Walk-Through Metal Detector



▶ General Description

HWMD-CCTV Video Type Digital Walk-through Metal Detector adopts international advanced digital detecting technology to perform security screening of pedestrian traffic in factory, prison, court, exhibition hall, stadium, entertainment venue, and other public facilities. This detector features high safety, good applicability and high sensitivity. The sensitivity is adjustable to detect and locate items as small as a paper clip.

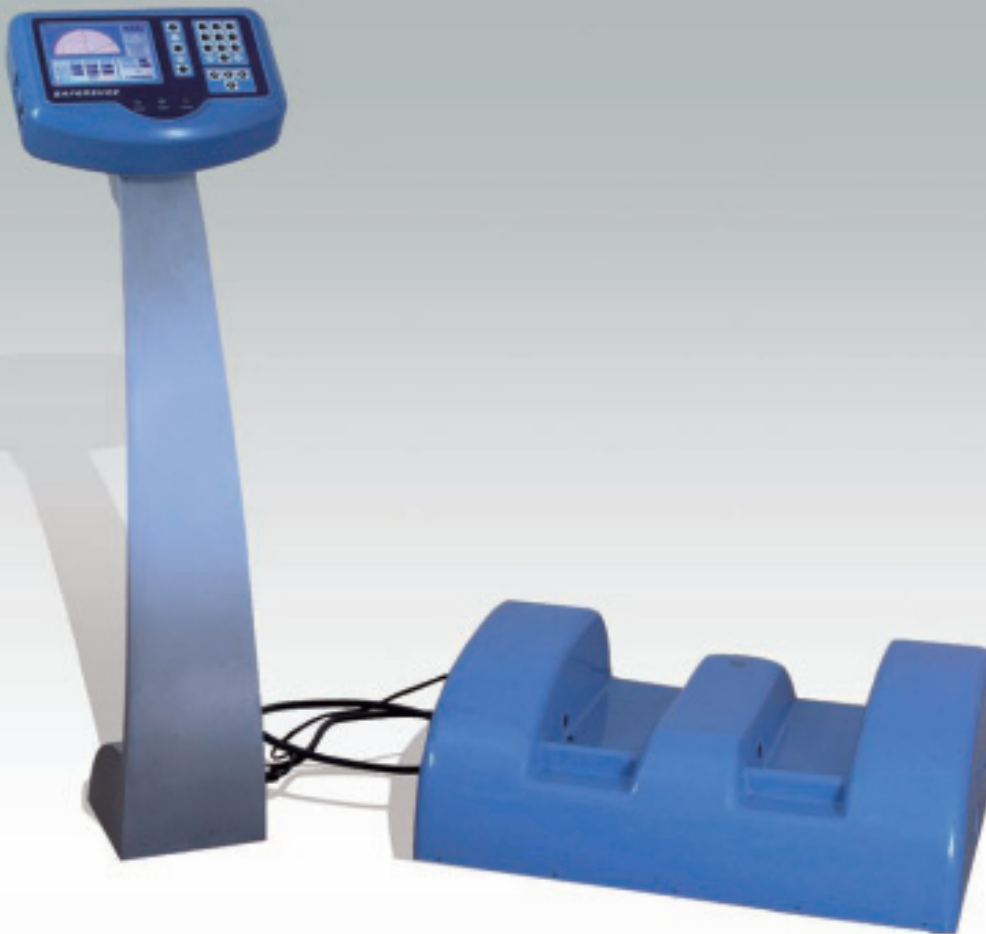
▶ Main Features

- Adopts advanced digital detecting technology.
- High safety, good applicability, high sensitivity.
- Integrated CCTV camera, which takes video about 3-4 hrs continuously and store more than 10,000 photos. The video is updated automatically.
- Automatically count the people passing through and alarm rates.
- Double password protection. No need for continuous power supply to maintain password protection.
- Meets EMC electromagnetic radiation standard, no harm to cardiac pacemaker carrier, pregnant woman, floppy disk, film, video tape, etc.
- The detector uses digital, analog and right-left balance technology to prevent false alarm or alarm failure.

▶ Principal Data

<u>Power Supply</u>	AC 100 V - 240 V, 50 Hz - 60 Hz
<u>Power Source</u>	< 35 W
<u>External Dimension</u>	2200 mm (H) × 800 mm (W) × 500 mm (D)
<u>Channel Dimension</u>	2010 mm (H) × 700 mm (W) × 500 mm (D)
<u>Available Colors</u>	black, white, dark blue available
<u>Total Weight</u>	~ 70 kg
<u>LCD Display</u>	English menu
<u>Alarm Modes</u>	sound and light alarm
<u>Storage</u>	can store photos in internal memory or in removable storage equipment
<u>Zone Sensitivity</u>	sensitivity selectable between 0-255 level
<u>Operation Mode</u>	panel number key; infrared remote control; computer long distance network interface
<u>Working Temp.</u>	-20 ~ +45°C
<u>Material</u>	PVC composite material, waterproof and dampproof

Safershoe Metal Detector



Safershoe Metal Detector



► General Description

The Safershoe Metal Detector features the capability of metal detection and discrimination. It is mainly used for detecting metals hidden in shoes and lower body area.

The Safershoe metal detector is a new and unique metal detector for shoes and lower body area, where the walk-through metal detector is inefficient in detecting metals. It is suitable for many applications in airports, railway stations, prisons, stadiums, and any other high security facilities, such as VIP homes and offices, office buildings, etc.

► Main Features

- Detect all kinds of metals.
- Ignore metal objects normally found inside shoes.
- Detect metal objects that should not be inside or alongside shoes.
- Discriminate different metals, such as copper, iron, aluminum, and more. Several sectors on the LCD screen indicate different metals. Operators can easily determine the metals on the basis of the position on screen.
- Sensitivity: be able to detect objects as small as a cardboard knife blade
- Detection time: 1.5 s per person.
- Visual LED for operation status indication.
- Adjustable warning level.
- Auto-save of detected data for later use, with max capacity of 150,000 persons/times.

► Principal Data

Power Supply

AC 110 V – AC 220 V

Power Consumption

25 w

Dimensions (sensor)

72 × 49 × 26 cm

Sensor Weight

27 kg

Underwater Metal Detector
Type **MD3080A**



Underwater Metal Detector Type **MD3080A**



► General Description

The Underwater Metal Detector MD3080A can be used both underwater and on the ground for metal material detection. With its special double shell impermeable case, all parts of MD3080A can be used in a depth up to 40 meters. It is the best tool for underwater treasure hunting. When MD3080A detects metal target, red light will be on and alarm will be heard. It has full range metal detecting function as well as suppression of false alarms triggered by ferrous metals. MD3080A is RoHS compliant and carries CE approvals.

► Usage

- MD3080A is the ideal tool for under water treasure hunting. Operator can explore their targets at beach, sea, fresh water and so on;
- Archaeology, mining, valuable metal detecting;
- Torpedo, cable and pipe detecting;
- In public security field, it can be used for underwater material safety screening.

► Main Features

- Can be used underwater at depth up to 40 meters;
- Aesthetic look, with aluminum case to increase operation safety;
- Adjustable sensitivity control;
- Audio & Audio alarm;
- Automatic low voltage alarm;
- Adjustable handles.

► Principal Data

<u>Detection Depth</u>	
50 Cents US Dollar Quarter Coin	18 cm
<u>Detecting Length for Underwater</u>	≤ 40 m
<u>Power Supply</u>	1 pcs of 9 V battery
<u>Current Consumption</u>	16 mA (stand by current)
<u>Operation Temperature</u>	-10 ~ +50 °C
<u>Adjustable Handles</u>	104 ~ 124 cm
<u>Size of Search Coil</u>	10 inch
<u>Weight</u>	~ 1.8 kg

Digital Metal Detector
Type **MD3060**



Digital Metal Detector Type **MD3060**



▶ General Description

The Digital Metal Detector MD3060 is based on intelligent processing control. Target image can be indicated on large LCD screen. It can discriminate iron, copper, aluminum, silver, gold as well as suppress false alarms triggered by ferrous metals. MD3060 detector is easy to operate with touch screen. It has a “No-Motion Pinpoint” system which allows operator to pinpoint a target by VCO (Voltage Controlled Oscillator) audio response. MD3060 detector is RoHS-compliant and carries CE approvals.

▶ Usage

- Airport, bus station and harbor electronic checking;
- Custom, police, frontier defense, prison, mining and defense department security checking;
- Treasure-finding;
- Useful for archaeology, mining, valuable metal detect.

▶ Main Features

- VCO Pinpoint audio, detect metal targets precisely, narrow down the range of detection;
- When using VCO Pinpoint function, the pitch of alarm sound is altered when the distance from search coil to metal target is changed.
- Different metals can be shown on LCD;
- Visual and audio alarm;
- 8 distinctive audio tones for different metals;
- Suppress false alarms triggered by ferrous metal (coins);
- 4 level adjustable sensitivity control;
- Automatic low voltage alarm;
- Adjustable handles;
- Search coils in two sizes (10 inch / 8 inch), 10 inch coil is waterproof;
- Headphone available.

▶ Principal Data

Detection Depth

50 Cents US Dollar Quarter Coin
50 Cents US Dollar Quarter Coin

22 cm (with 10 inch search coil)
15 cm (with 8 inch search coil)

Power Supply

2 pcs of 9 V batteries

Current Consumption

35 mA (stand by current)

Operation Temperature

-10 ~ +50 °C

Adjustable Handles

108 ~ 133 cm

Size of Search Coil

8 inch or 10 inch

Weight

~ 1.5 kg

Multi-purpose Mine Detector
Type **90**



Multi-purpose Mine Detector Type 90



► General Description

The Multi-Purpose Mine Detector Type 90 integrates both non-metallic and metallic mine detecting functions into one model. Thus, it can effectively reduce false alarm, increase the confidence of the operator, and shorten the detecting and clearing time.

► Principal Data

Max. Detection Depth (Search head 50 mm above the ground surface)

-Not less than 80 mm for anti-tank mines with diameter ≥ 275 mm

-Not less than 20 mm for anti-personnel mines with diameter ≥ 78 mm

Weight: < 3.5 kg (excluding battery)

Operating Temperature: $-40^{\circ}\text{C} \sim +55^{\circ}\text{C}$ (excluding battery)