

Individual Combat System for Police



Individual Combat System for Police

► General Description

The Individual Combat System for Police is a digital system integrating advanced technologies into conventional equipment such as fire arms, electro-optical sight, communication and protection modules. The system provides integrated combat capability and improves the efficiency of individual soldier for command and control, cooperation, situation awareness, information management and sharing within combat unit.



► System Composition

With modular structure and open design, the Individual Combat System is composed of weaponry subsystem, information subsystem and protection subsystem. The weight of the basic system is 14.3 kg. The Line of Sight communication distance is more than 1,000 meters. The system supports more than 9 networking nodes and can operate continuously for 12 hours.

- *Weaponry Subsystem*

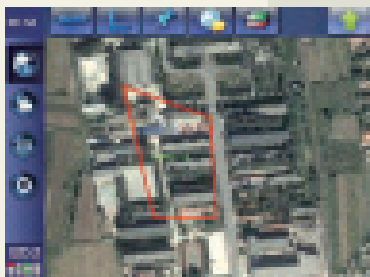
The weaponry subsystem is composed of 5.56 mm Automatic Rifle Type 97 and 40 mm Under Barrel Mounted Grenade Launcher for overwhelming fire power.

- *Information Subsystem*

The Information Subsystem is composed of individual soldier computer, combat command software, helmet display and GPS module, which greatly enhance the level of information processing, command and control, information retrieval, navigation, positioning and human-machine interaction.

- *Protection Subsystem*

Composed of bulletproof helmet, bulletproof structural frame and bulletproof plate, the protection subsystem provides ballistic protection to individual soldier and a carrying frame for all the functional modules of the combat system.



Individual Combat System for Police



► System Functions

● *Fire Attack*

- Rifle Killing Range: 400 m
- Grenade Launcher Range: 400 m
- Equipped with helmet display or computer display for off line shooting.

● *Observation and Aiming*

Equipped with day light and infrared gun sight for day and night operation.

● *Information Processing and Integrated Management*

- Situation Awareness with digital map.
- Navigation and Positioning with predefined route, distance and area measuring.
- Document Processing with standard text editing, unicast and multicast transmission.
- Real time image capturing, editing and transmission.
- Rapid input and vectorization of cartographic map, imaging map and aerial photos.

● *Team Networking and Communication*

- Ad hoc network for voice and data communication among team members.
- Three-way simultaneous conversation, with the third party, break in at any time in emergency.
- Simultaneous transmission of voice and data without interference from each other.

● *Integrated Protection and Carrying Support*

- Overall ballistic protection at NIJ IIIA level covers head and torso, tested according to NIJ0101.04 standard.
- Bulletproof helmet and carrying frame can provide NIJ III level protection with additional ballistic plates.
- Integral and ergonomical carrying frame fits body contours and provides secured support for system equipment.

.45 Pistol

Type **CS-LP6**



.45 Pistol
Type **CS-LP6**



► Principal Data

| | |
|---|--|
| <u>Caliber</u> | .45 ACP |
| <u>Overall Dimension</u> | 195 × 41 × 140 mm |
| <u>Overall Weight (With One Empty Magazine)</u> | ≤ 0.93 kg |
| <u>Effective Range</u> | 50 m |
| <u>Muzzle Velocity</u> | ≥ 230 m/s |
| <u>Accuracy (25 m Fixed Mount)</u> | R ₅₀ ≤ 7 cm R ₁₀₀ ≤ 12 cm |
| <u>Magazine Capacity</u> | 12 rounds |
| <u>Trigger Pull</u> | single action 15 ~ 30 N double action ≤ 65N |
| <u>Service Time</u> | 5,000 rounds |
| <u>Malfunction Rate</u> | ≤ 2‰ |

9mm Pistol

Type **CF98**



9mm Pistol
Type **CF98**



► Principal Data

| | |
|--------------------------|---|
| Caliber | 9 × 19 mm Para. |
| Effective Range | 50 m |
| Magazine Capacity | 15 rds |
| Trigger Pull | |
| -Single-action | 1.5 ~ 2 kg |
| -Double-action | ≤ 6.5 kg |
| Total Weight | |
| (with empty magazine) | 0.76 kg |
| Service Life | > 10,000 rds |
| Malfunction Rate | < 0.2% |
| Muzzle Velocity | 350 m/s |
| Shooting Accuracy (25 m) | $R_{50} \leq 6 \text{ cm}$, $R_{100} \leq 15 \text{ cm}$ |
| Safety Block | Double sides, 3 levels |
| Dimension | 190 × 35 × 135 mm |
| Barrel Length | 111 mm |

9 mm Mini Pistol

Type **CS-LP5**



9 mm Mini Pistol
Type **CS-LP5**



► General Description

9 mm Mini Pistol is developed on the bases of the mature 9 mm Pistol Type CF98 while reducing the size. It can covertly kill and wound live target within 50 m. The Pistol is widely used by armed police and security guards in airports, banks or important storehouses. It is also an important weapon for special battlefields such as anti-terrorism, anti-drug and anti-smuggling operation.

► Principal Data

| | |
|--|--|
| Caliber | 9 × 19 mm Parabellum |
| Muzzle Velocity | 320 m/s |
| Effective Firing Range | 50 m |
| Dimension (L×W×H) | 160 × 30 × 125 mm |
| Overall Weight (With One Empty Magazine) | 0.6 Kg |
| Cartridge | 9 × 19 parabellum pistol cartridge |
| Firing Accuracy (25m, Standing Position, Hand-held Without Prop) | R ₅₀ ≤ 5.5 cm, R ₁₀₀ ≤ 12 cm |
| Magazine Capacity | 7 rounds |
| Failure Rate | ≤ 0.1% |
| Life Time | > 5,000 rounds |

9mm Pistol
Type **NP18**



9mm Pistol
Type **NP18**



► General Description

9 mm Pistol Type NP18 is similar to Browning high power pistol. It is a superb pistol for its manual firing pin safety device, running firing, beautiful appearance, excellent operational properties and large magazine capacity have made it a superb pistol.

► Principal Data

| | |
|-------------------------------------|----------------------|
| Caliber | 9 × 19 mm Parabellum |
| Magazine Capacity | 14 rounds |
| Muzzle Velocity | 336 m/s |
| Effective Range | 50 m |
| Overall Dimensions | 204 × 35 × 135.5 mm |
| Weight (Incl. an Unloaded Magazine) | 1 kg |

Type 54 Pistol Series



Type 54 Pistol Series



7.62 mm Pistol Type 54

► Principal Data

| | |
|--|---------------------|
| <u>Caliber</u> | 7.62 mm |
| | 7.62 mm × 25 mm |
| <u>Magazine Capacity</u> | 8 rounds |
| <u>Muzzle Velocity</u> | 427 m/s |
| <u>Effective Range</u> | 50 m |
| <u>Overall Dimensions</u> | 196 × 30 × 128.5 mm |
| <u>Weight (Incl. an Unloaded Magazine)</u> | 0.85 kg |



201C Pistol

► General Description

The pistol is an improved model of Type 54 pistol. Applying a 9mm barrel with an ammo feeding system, a larger arc grip and adding a manual safety device, all these features have improved its appearance based on the original properties and increased market competitiveness.

► Principal Data

| | |
|--|----------------------|
| <u>Caliber</u> | 9 mm 9 mm × 19 mm |
| <u>Magazine Capacity</u> | 8 rounds |
| <u>Muzzle Velocity</u> | 330 m/s |
| <u>Effective Range</u> | 50 m |
| <u>Overall Dimensions</u> | 203 × 35 × 138 mm |
| <u>Weight (Incl. an Unloaded Magazine)</u> | 0.94 kg |



NP17 Pistol

► General Description

NP17 Pistol is identical to 201C pistol in basic construction and properties. The only difference lies in its handle which is chrome plated with a large straight grip. The changing of appearance can meet the different demand of different customers.

► Principal Data

| | |
|--|-------------------|
| <u>Caliber</u> | 9 mm 9 × 19 mm |
| <u>Magazine Capacity</u> | 8 rounds |
| <u>Muzzle Velocity</u> | 330 m/s |
| <u>Effective Range</u> | 50 m |
| <u>Overall Dimensions</u> | 203 × 35 × 138 mm |
| <u>Weight (Incl. an Unloaded Magazine)</u> | 0.94 kg |

Type 54 Pistol Series



T11 Pistol

► General Description

This pistol is identical to Type 54 pistol. Its construction and property parameters are completely the same as Type 54 pistol. The only difference lies in its design on the slide to suit the different requirements of different customers.

► Principal Data

| | |
|-------------------------------------|---------------------|
| Caliber | 7.62 mm |
| Ammunition | 7.62 × 25 mm |
| Magazine Capacity | 8 rounds |
| Muzzle Velocity | 427 m/s |
| Effective Range | 50 m |
| Overall Dimensions | 196 × 30 × 128.5 mm |
| Weight (Incl. an Unloaded Magazine) | 0.85 kg |

CQ 9mm

Revolver Pistol



CQ 9mm
Revolver Pistol



► Principal Data

| | |
|-----------------|--------------------|
| Caliber | 9 mm |
| Ammunition | 9 mm revolver ammo |
| Muzzle Velocity | 200 m/s |
| Effective Range | 50 m |
| Firing Mode | single/double |
| Ammo Capacity | 6 rounds |
| Service Life | ≥ 3,000 rounds |
| Total Weight | ≤ 0.7 kg |
| Total Length | ≤ 190 mm |

Corner Gun



Corner Gun



► General Description

The Corner Gun is composed of 9 mm pistol Type CF98 and corner sight device. It is a new kind of defense and attack weapon for policemen helping to reduce the possibility of casualty or injury in the task of assaulting, reconnaissance and street battle.

► Features

- Multi-function
- Weather resistance
- Light weight; convenient maintenance
- Patented technology

► Principal Data

| | |
|---|---|
| Suited Weapons | 9 mm pistol Type CF98 |
| Overall Weight | ≤ 3.9 Kg (with pistol) |
| Accuracy | $R_{50} \leq 5 \text{ cm}$ $R_{100} \leq 12.5 \text{ cm}$ |
| Continuous Working Time | ≥ 2,000 h |
| Effective Range | ≥ 50 m |
| Continuous Working Time of Power Supply | ≥ 2 h |
| LCD Monitor Size | 2.5" |
| Resolution Ratio | ≥ 480 x 234 |
| Illumination | ≥ 250 cd/m ² |

CQ 5.56mm Automatic Rifle



CQ 5.56mm Automatic Rifle



► General Description

CQ 5.56 mm Automatic Rifle is a weapon for individual infantryman. It could be used for both automatic and semiautomatic firing, intended to destroy single or group active targets within 460 m. It features light weight, high firing accuracy, simple and convenient operation and a large capacity magazine.

► Principal Data

| | CQ | CQ-B |
|------------------------|-----------------|-----------------|
| Caliber | 5.56 × 45 mm | 5.56 × 45 mm |
| Ammunition Fired | M193 cartridge | SS109 cartridge |
| Magazine Capacity | 20 or 30 rounds | 20 or 30 rounds |
| Total Weight | 3.2 kg | 3.8 kg |
| Total Length | 987 mm | 1,003 mm |
| Service Life | ≥ 6,000 rounds | ≥ 6,000 rounds |
| Malfunction Rate | ≤ 0.2% | ≤ 0.2% |
| Muzzle Velocity | 940 m/s | 900 m/s |
| Twist Pitch of Rifling | 12 in | 7 in |
| Effective Range | 460 m | 460 m |

5.56 mm Automatic Rifle

Type **CQ-A**



5.56 mm Automatic Rifle
Type **CQ-A**



► General Description

5.56 mm Automatic Rifle Type CQ-A is a weapon for individual infantryman. It could be used for both automatic and semiautomatic firing, intended to destroy single or group active targets within 460 meters. It features light weight, high firing accuracy, simple and convenient operation and a large capacity magazine.

► Principal Data

| | |
|----------------------------------|--|
| <u>Caliber</u> | 5.56 mm |
| <u>Ammunition Fired</u> | SS109 cartridge M193 cartridge if necessary |
| <u>Automatic Mode</u> | gas operated |
| <u>Ammunition Feeding</u> | 30-round magazine |
| <u>Total Weight</u> | 3.3 kg |
| <u>Total Length</u> | 787 ~ 883 mm |
| <u>Service Life</u> | ≥ 6,000 rounds |
| <u>Malfunction Rate</u> | ≤ 0.2% |
| <u>Muzzle Velocity</u> | 884 m/s (SS109 cartridge) |
| <u>Dispersion Accuracy</u> | (100 m range, 10 rounds of single shooting, 10 single rounds complete dispersion, diameter of the circle) ≤ Φ 13.9 cm |
| <u>Theoretic Firing Velocity</u> | (650 ~ 950) rds/min |
| <u>Barrel, Rifling and Pitch</u> | RH, 6 grooves; Pitch 9 in |

5.56mm Short Automatic Rifle
Type **97/97A**



5.56mm Short Automatic Rifle Type **97/97A**



► General Description

5.56 mm Short Automatic Rifle Type 97 is a self-defense weapon used by individual soldier in infantry, special force commander and SWAT team. It is mainly used to disable live target within a range of 300 m. It can be equipped with day light sight, dim light sight and simple night vision device.

► Features

- Reliable in performance, it is suitable for all harsh environments.
- The butt is folded to the right; It is elegant in appearance, convenient for handling.
- The magazine adopts alnico material, the surface is processed with anticathode oxidation. The butt, lower trigger guard, left and right guard plate are made of engineering plastic.
- It can be equipped with multifunctional bayonet and under barrel grenade launcher.
- It can be equipped with day light sight, dim light sight and thermal night vision device.
- It possesses three-shot burst function that improves the first shot hit probability.

► Principal Data

| | Type 97 | Type 97A |
|-------------------|--|--------------------------|
| Caliber | 5.56 mm | 5.56 mm |
| Cartridge | 5.56 × 45 mm SS109, M193 | 5.56 × 45 mm SS109, M193 |
| Overall Length | 620 mm | 760 mm |
| Total Weight | 3.25 Kg | 3.5 Kg |
| Effective Range | 300 m | 400 m |
| Muzzle Velocity | 830 m/s | 920 m/s |
| Method of Fire | single shot, continuous firing and 3-round burst | |
| Sight | mechanical sight and optical sight | |
| Magazine Capacity | 30 rounds | 30 rounds |

5.56mm Sniper Rifle

Type **97**



5.56mm Sniper Rifle
Type 97



► General Description

5.56 mm Sniper Rifle Type 97 is used by individual soldier to kill single important live object within a range of 600m by covert, unexpected and exact shooting.

► Features

- Reliable in performance, suitable for all harsh environments.
- It adopts no-butt structure; the bolt revolving locking mechanism achieves high precision.
- The first small-bore semi-automatic sniper rifle in the world, with compact structure, lighter, elegant appearance, easy in operation and convenient in maintenance.
- It adopts mechanic sight device and can be equipped with day light sight and dim light sight.
- Dismountable bipod, adjustable fire axis.

► Principal Data

| | |
|--------------------------|--|
| Caliber | 5.56 mm |
| Cartridge | 5.56 × 45 mm SS109 or M193 |
| Overall Length | 920 mm |
| Total Weight | |
| (With a Telescope Sight) | 4.1 kg |
| Effective Range | 600 m |
| Muzzle Velocity | 950 m/s |
| Precision | R ₅₀ ≤ 3.5 cm at 100 m, single shot |
| Sight | mechanical sight or optical sight (optional) |
| Magazine Capacity | 10 rounds |

5.56 mm General Purpose
Machine Gun
Type **97**



5.56 mm General Purpose
Machine Gun Type **97**



► General Description

5.56 mm General Purpose Machine Gun Type 97 is a main automatic weapon for infantry company. It is mainly used as a heavy machine gun and can also be used as a light machine gun or used to fire against enemy's aircraft. This machine gun is equipped with mechanical rear sight and day light sight with 4X magnification. It mainly fires 5.56 mm SS109 cartridges and also 5.56 mm M193 general cartridges.

► Principal Data

Calibre

5.56 mm

Muzzle Velocity

920 ± 5 m/s

Effective Range

1,000 m

Total Weight

(include: gun body, bipod, tripod)

12 kg

Fire Rate

-Cyclic Rate

≥ 700 Rs/min

-Fight Rate

≥ 200 Rs/min

Cartridges Feed

-Feeding Mode

drum magazine and belt link.

-Capacity of Cartridges Container

76 Rs drum magazine and 200 Rs
ammunition box

7.62mm Assault Rifles

Type **56**



- Type 56

- Type 56-1

- Type 56-2

7.62mm Assault Rifles Type 56



► General Description

The 7.62mm Assault Rifles Type 56 include Type 56 (wooden butt-stock), Type 56-1 (up-folding butt-stock) and Type 56-2 (side-folding butt-stock). They are excellent automatic weapons for infantrymen.

► Principal Data

| | |
|---------------------------|-----------------|
| Caliber | 7.62 mm |
| Ammunition | 7.62 × 39 mm |
| Muzzle Velocity | 710 m/s |
| Effective Range | |
| -Burst | 300 m |
| -Single | 400 m |
| Rate of Fire | |
| -Burst (2 ~ 3 rds) | 90~100 rds/min. |
| -Single | 40 rds/min. |
| Weight | 3.8 kg |
| Length | |
| -Type 56 | 874 mm |
| -Type 56-1 (stock folded) | 645 mm |
| -Type 56-2 (stock folded) | 654 mm |

► Optional Sight

| | Day Sight Type 56-1 | Night Vision Sight Type 56-1 |
|-----------------------------------|---------------------|---|
| Magnification | 3.8× | 3× |
| Field of View | 5.5° | ≥ 12° |
| Exit Pupil Diameter | 4.5 mm | 9 mm |
| Exit Pupil Distance | 45 mm | 30 mm |
| Resolution | | ≤ 1 mrad (at 10 Lx, contrast 35% ~ 40% on the scotopic resolution board) |
| Aiming Capability | | ≥ 300 m (at 10 Lx, medium contrast of background, atmosphere visibility is more than 15 km) |
| Eyepiece Diopter | -0.5 ~ -1 | -0.5 ~ -1 |
| Range Setting Scale | | 400 m |
| Deflection Setting Scale | | ≥ ±10 mil |
| Zero Excursion | | |
| (Include Repeat Fixing Precision) | | ≤ 0.7 mil |
| Weight | ≤ 0.43 Kg | ≤ 0.85 Kg |

7.62 mm Automatic Rifle
Type **81/81-1**



7.62 mm Automatic Rifle
Type **81/81-1**



► General Description

The 7.62 mm Automatic Rifle Type 81/81-1 is an automatic weapon for infantry units against group or individual targets within 1,500 meters. It can fire various 7.62 mm cartridges and rifle grenades, and penetrate 7 mm steel plate within 200 meters with armor-piercing incendiary or tracer cartridges. It has a foldable metal butt-stock and a removable bayonet (optional).

► Principal Data

| | |
|--|--------------------|
| Caliber | 7.62 mm |
| Ammunition | 7.62 × 39 mm |
| Muzzle Velocity | 720 m/s |
| Effective Range | 400 m |
| Rate of Fire | |
| -Semi-automatic | 45 rds/min. |
| -Automatic | 100 ~ 115 rds/min. |
| Length | |
| -With butt extended, and bayonet | 1,105 mm |
| -With butt extended, without bayonet | 955 mm |
| -With butt folded, without bayonet | 730 mm |
| Weight | |
| (with empty magazine, bayonet and accessories) | 3.5 kg |
| Magazine Capacity | 30 rds |

5.56mm Automatic Rifle

Type **06**



5.56mm Automatic Rifle Type **06**



► General Description

5.56 mm Automatic Rifle Type 06 is a kind of weapon used by individual soldier. It is mainly used to disable live object within a range of 400 mm.

► Principal Data

Caliber

5.56 mm

Cartridge

5.56 × 45 mm M193

Overall Length

butt stock unfolded 878 mm,
butt stock folded 650 mm

Method of Fire

single shot, mechanical

Magazine Capacity

30 rounds

7.62mm Sniper Rifle

Type **85**



7.62mm Sniper Rifle
Type **85**



► General Description

7.62mm Sniper Rifle Type 85 is a semi-automatic weapon against single target within 800 meters.

► Principal Data

| | |
|--|------------------|
| Caliber | 7.62 mm |
| Ammunition | 7.62 × 54 mm |
| Muzzle Velocity | 830 m/s |
| Effective Range | 800 m |
| Mechanical Sight | 1,200 m |
| Optical Sight (optional) | 1,300 m |
| Rate of Fire | 30 ~ 40 rds/min. |
| Length | 1,200 mm |
| Magazine Capacity | 10 rds |
| Weight | |
| -Without cartridges, optical sight and cheek rest | 3.8 kg |
| -Without cartridges, with optical sight and cheek rest | 4.4 kg |
| -With cartridges, optical sight and cheek rest | 4.6 kg |

7.62mm High Precision Sniping Rifle



7.62mm High Precision Sniping Rifle



► General Description

7.62 mm High Precision Sniper Rifle is used with 7.62 mm × 51 mm sniper cartridge to disable active target within 600 m in counter-terrorism and anti-kidnapping operations.

- International Picatinny guide
- The cheekpiece adjusted up and down and the butt stock adjusted forward and backward
- The finish forging barrel is adopted

In counter-terrorism and kidnap action, the specified training person using 7.62 mm sniping cartridge to kill single important live object with in a range of 600 m by exact shooting.

► Features

- It adopts single shot bolt action to reduce moving part friction that degrades shooting precision.
- It adopts heavy barrel to for better heat dissipation.
- It adopts double-pull trigger design on the trigger to eliminate the shooter's emotional tension and ensure shooting precision.
- The non-percussion feed system reduces the damage to bullet shape and ensures shooting precision.
- It achieves optimization that the rifle matching cartridge, according to the available rifle or cartridge parameter and the better design of feeding mechanism.
- The interface of human and rifle is suitable to individual difference and meets comfortable needs of shooter.
- It adopts international universal Picatinny interface, and can be equipped with daylight sight and dim light sight.

► Principal Data

| | |
|---|--|
| <u>Caliber</u> | 7.62 mm |
| <u>Cartridge</u> | 7.62 × 51 mm sniping cartridge |
| <u>Shooting Precision</u> (3 rounds average) | at 100 m with optical sighting; whole dispersion diameter ≤ 2.9 mm at 300 m with optical sighting; whole dispersion diameter ≤ 8.7 mm |
| <u>Method of Fire</u> | single shot |
| <u>Sight</u> | daylight sight and dim light sight |
| <u>Total Weight</u> | 6.8 kg |
| <u>Overall Length</u> | 1,150 mm |
| <u>Feeding Method</u> | 5 rounds magazine |

9 mm Submachine Gun
Type **CS-LS3**



9 mm Submachine Gun Type **CS-LS3**



► General Description

Submachine Gun Type CS-LS3 is a kind of excellent performance submachine gun, famous for high firing accuracy. The gun is of semi-blowback automatic type. The lock mode is roller delayed lock, and the feed is a 30 round arc magazine. The buttstock is foldable. The components of complete gun are modularized, which enables easy and simple stripping and reassembling. The gun features good serviceability, appealing appearance, comfortable holding. The gun has become a preferred weapon for anti-terrorist and anti-riot operations in many countries.

► Principal Data

| | |
|---|--|
| <u>Caliber</u> | 9 mm |
| <u>Cartridge</u> | 9 × 19 mm parabellum pistol cartridge |
| <u>Muzzle Velocity</u> | 370 ~ 400 m/s |
| <u>Firing Rate</u> | ≤ 900 rds/min. |
| <u>Firing Mode</u> | single shot, 3 rounds burst fire, continuous fire |
| <u>Type of Feed</u> | magazine |
| <u>Magazine Capacity</u> | 30 rds |
| <u>Overall Weight</u> | ≤ 2.93 kg (without magazine) ≤ 3.2 kg (with one empty magazine) |
| <u>Overall Length</u> | |
| -Buttstock Folded | ≤ 495 mm |
| -Buttstock Extended | ≤ 665 mm |
| <u>Barrel Length</u> | 225 mm |
| <u>Accuracy</u> | |
| (Firing Distance: 50m, Hand Hold or Fixed Mount) | |
| -Single Shot | $R_{50} \leq 6 \text{ cm}$, $R_{100} \leq 13 \text{ cm}$ |
| -Burst Fire | $C_y \times C_z \leq 17 \times 17 \text{ cm}$ (70% dispersion) |
| <u>Life Time</u> | ≥ 8,000 rds |
| <u>Environment Temperature</u> | -45℃ ~ 55℃ |

9 mm Silenced Submachine Gun
Type **CS-LS2**



9 mm Silenced
Submachine Gun
Type **CS-LS2**



► General Description

9 mm Silenced Submachine Gun is an individual self-defense weapon for special force, special duty group and police. It can kill an active target within 200m. The gun is powerful and convenient in carrying and operation. It is mainly used for special operations such as anti-riot, antiterrorism and suppressing smuggling. It can be equipped with daylight sights or night sights and laser indicator.

► Features

- Reliable in performance, high in accuracy.
- Light and short, easy to be carried by special soldiers.
- Minimal sound, flare and smoke for covert operation.
- It adopts international universal Picatinny interface rail, and can be equipped with daylight sights and night sights for all-weather operation. It also can be equipped with laser indicator and tactical light .
- It adopts engineering plastic aluminum alloy body with chemical coating treatment for good anticorrosion property.
- Silencer is dismountable.

► Principal Data

Caliber

9 mm

Ammunition

9 mm Parabellum cartridge

9 mm low penetration cartridge

Muzzle Velocity

≥ 360 m/s

Total Weight

(Including One Empty Magazine,
Without Silencer)

≤ 2.2 kg

Total Length

without silencer ≤ 450 mm;

with silencer ≤ 620 mm

Magazine Capacity

30 rounds

Pump Action Shotgun

Type **YL12-1JZ**



Pump Action Shotgun
Type **YL12-1JZ**



► General Description

Pump Action Shotgun Type YL12-1JZ has the advantage of elegant shape, high accuracy in firing, safe and reliable operations. With accurate close range firing, this compact shotgun is convenient for operation indoors as well as outdoors.

► Principal Data

| | |
|-------------------------------|---|
| Caliber | 12 gauge |
| Bore | smooth bore barrel |
| Barrel Length | 508 mm |
| Total Length of Gun | |
| -Butt extended | 960 mm |
| -Butt Folded | 730 mm |
| Total Weight (Empty Magazine) | 3.50 Kg |
| Butt/Stock | metallic flat butt (covered by highly resistant, anti-shock and unbreakable synthetic material) |
| Pistol Grip | |
| Magazine | metallic |
| Magazine Capacity (Round) | 4+1 round |
| Firing Mode | Manual/Reloader |
| Chamber Length | 70 mm |
| Effective Range | 50 m |

12.7mm Heavy Machine Gun

Type **W89**



12.7mm Heavy
Machine Gun
Type **W89**



► General Description

12.7 mm Heavy Machine Gun Type W89 is mainly used to destroy enemy mass targets within 1,500 meters. It has the capability of destroying enemy light-armored targets and attacking low flying enemy aircrafts within 1,000 meters.

It adopts gas-operated automatic and short-distance recoil barrel, bolt-revolved lock, dispersible link belt feeding, simultaneous adjusting in both elevation and traversing, adjustable cyclic firing rate and quick-changing barrel. It can be matched with day light or dim-light optical sight, disassembled totally without any special tools. It is the lightest model among the same caliber machine guns in the world.

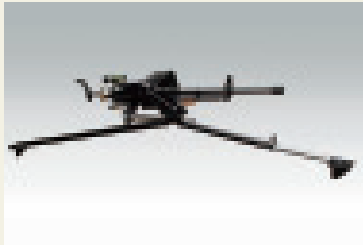
► Principal Data

| | |
|-------------------------|---|
| Caliber | 12.7 mm |
| Muzzle Velocity | 800 m/s (12.7 mm API type 54) |
| Effective Range | 1,500 m |
| Total Weight | 26.5 kg |
| Ammunition Box Capacity | 50 rounds |
| Cyclic Firing Rate | (450 ~ 650) rds/min (adjustable) |
| Service Life | 6,000 rounds |
| Ammunition | 12.7mm API type 54 12.7mm Tungsten Alloy APDS type 84 12.7mm API-T type DVY89 12.7mm APDS-HEI type DVB89 |

12.7 mm Anti-aircraft
Machine Gun
Type **W85**



12.7mm Anti-aircraft
Machine Gun
Type **W85**



► General Description

12.7 mm Anti-aircraft Machine Gun Type W85, provided for the infantry battalions, is mainly an anti-aircraft automatic weapon, but it also could be fired at ground targets. It is mainly used for firing against low-altitude enemy aircrafts and light-armored transporting vehicles as well as suppressing the firepower of the enemy aircraft or machine guns.

12.7 mm Anti-aircraft Machine Gun Type W85 consists of three major parts including gun body, gun mount and accessories. It adopts an automatic mechanism of gas-operated long piston, forced lock with an anti-bounce device, a feeding mode of double strokes. The main parts of the gun could be disassembled and reassembled rapidly without any tools.

► Principal Data

| | |
|--|---|
| Caliber | 12.7 mm |
| Muzzle Velocity | 12.7 mm API Type 54: 800 m/s 12.7 mm Tungaloy APDS Type 84: 1150 m/s |
| Length of Sighting Radius | 869 mm |
| Theoretic Firing Velocity | (540-600) rds/min (adjustable) |
| Range of Rear Sight | 1,600 m |
| Effective Range | 1 600m (anti-aircraft) 1,500m (ground) |
| Height of Fire Line | in ground firing position: 320 mm in anti-aircraft firing position: 1,250 mm |
| Elevation Range | in ground firing position: -15 ~ 25° in anti-aircraft firing position: -15 ~ 80° |
| Traversing Range | in ground firing position: 120° in anti-aircraft firing position: 120° |
| Total Weight | 39 Kg |
| -Weight of Gun Body | 18.5 Kg |
| -Weight of Gun Mount | 15.5 Kg |
| -Weight of Sight for Anti-aircraft | 1 Kg |
| -Weight of Link Belt Box (60 Sections) | 4 Kg |
| Total Length (In Ground Firing Position) | 1,995mm |
| -Total Width (In Ground Firing Position) | 1,122mm |
| -Length of Gun Body (Shoulder Stock Opened) | 1,755.9mm |
| -Length of Gun Body (Shoulder Stock Folded) | 1,502.3mm |
| Service Life | no less than 7,000 rounds when 12.7 mm API are fired |

14.5 mm Single-barrel
Anti-aircraft Machine Gun

Type **QJG02G**



14.5 mm Single-barrel
Anti-aircraft Machine Gun
Type **QJG02G**



► General Description

14.5 mm Single-barrel Anti-aircraft Machine Gun Type QJG02G is a main air defence automatic weapon for infantry. It is used to destroy or damage air targets within the range of 2,000 m and the light armored targets of land and water, such as infantry vehicle, armored vehicle and light warship etc.

If necessary, it can be used to annihilate group targets that hide behind light bunker within the range of 2,500 m, neutralize enemy's firing points, and deny entmy access.

It fires 14.5 mm cartridges tyge 56 and wolfram alloy core discarding sabot armor-piercing incendiary tracer cartridges type DGJ02, armor-piercing explosive incendiary cartridges type DGE02. It is equipped with day light sight.

► Principal Data

| | |
|-----------------|---|
| Calibre | 14.5 mm |
| Muzzle Velocity | 980/1,250 m/s |
| Effective Range | 2,000 m |
| Total Weight | 110 kg (not include 50Rs belt link, blank ammunition box, sight, towed wheel) |
| Cyclic Rate | ≥ 500 Rs/min |
| Cartridges Feed | 5 Rs belt link (looseable) |

38mm

Under Barrel Grenade
Launcher



38 mm

Under Barrel Grenade Launcher



► General Description

38 mm Under Barrel Grenade Launcher is a non lethal weapon for law enforcement operations. It is used to disperse rioters at 100 to 130 meters and criminals hidden inside buildings.

The launcher can be fitted to Type 56 Series, Type 81 Series and Type 97 rifles under the barrel. Its operation does not affect the original functions of the rifle. When dismounted, the launcher can be operated independently.

► Principal Data

| | |
|-----------------------|----------------------------------|
| Calibre | 38 mm |
| Max. Range | 100 m |
| Length | 390 mm |
| Weight | 1.4 kg |
| Firing Mode | single shot, manual loading |
| Life Time | 3,000 rounds |
| Compatible Ammunition | chinese standard 38 mm grenades. |

40 mm Under Barrel Mounted
Grenade Launcher

Type **CQ40**



40 mm Under Barrel
Mounted Grenade
Launcher
Type **CQ40**



► General Description

Under Barrel Mounted Grenade Launcher Type CQ40 is a single-firing weapon launching calibre 40 mm rear loading grenades. It could be attached to the barrel of 5.56 mm M16 series rifle. The main components of the launcher include launching tube, receiver, armguard body, quadrantal sighting device. This launcher is a close fighting weapon for individual soldiers, featuring simple structure, convenient operation, reliable performance, low malfunction rate, light weight, high portability, and multiple ammunitions, etc. It is mainly used to kill and wound active targets, but it also could be used to achieve other purposes such as armor breaking, illumination, signal indication and used as smoke screen dispenser. It provides suppressive and supportive firepower for the rifles and machine guns.

► Principal Data

| | |
|------------------------------|--|
| Calibre | 40 mm |
| Muzzle Brake | 74.7 m / s |
| Effective Range | 350 m (with quadrantal rear sight) |
| Firing Mode | single |
| Loading Mode | launching tube slide forward, rear loading |
| Length of Launcher | ≤ 400 mm |
| Length of Launching Tube | 305 mm |
| Weight of Launcher | ≤ 1.5 kg |
| 75 m Target-setting Accuracy | E_z (traversing) × E_y (elevation) ≤ 0.4 m × 0.5 m |
| Service Life | ≥ 1,000 rounds |
| Malfunction Rate | ≤ 0.3% |

40 mm Automatic Grenade Launcher

Type **LG3**



40 mm Automatic
Grenade Launcher
Type **LG3**



► General Description

40 mm Automatic Grenade Launcher Type LG3 is used to neutralize enemy's firing point within 800 m, to kill and wound exposed and concealed enemy personnel group targets within 2,200 m and destroy enemy light armored objects within 600 m. It is a squad weapon that can be mounted on mobile platforms such as ground fighting vehicles, patrol boats, charge boats and helicopters.

► Principal Data

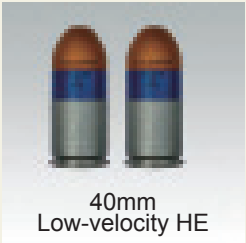
| | |
|------------------|--|
| Caliber | 40 mm |
| Muzzle Velocity | 240 m/s |
| Max. Range | 2,200 m |
| Firing Method | auto/semi-auto |
| Feeding Capacity | 30 rounds/box |
| Feeding Type | link-belt feed either from the left or the right |
| Gross Weight | 43 Kg (not including the feeding tool) |

40mm

Low-velocity HE/HEDP Grenade



40mm
Low-velocity HE/HEDP
Grenade



► Principal Data

40 mm Low-velocity HE

| | |
|-------------------------|---------|
| Caliber | 40 mm |
| Length | 99 mm |
| Total Weight | 227 g |
| Average Muzzle Velocity | 76 m/s |
| Maximum Range | ≥ 400 m |
| Quantity of Fragments | ~ 300 |
| Lethal Radius | ≥ 5 m |

40 mm Low-velocity HEDP

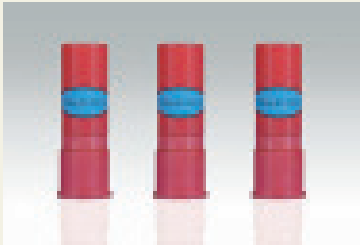
| | |
|-------------------------|---|
| Caliber | 40 mm |
| Length | 100 mm |
| Total Weight | 225 g |
| Average Muzzle Velocity | 76 m/s |
| Maximum Range | ≥ 400 m |
| Penetration | When fired at 40 mm thick armoured plate at 60°, the penetrating rate is more than or equal to 80% |
| Lethal Radius | ≥ 5 m |

38mm Cartridge Series



38mm Grenade Series

38mm Anti-riot Cartridge



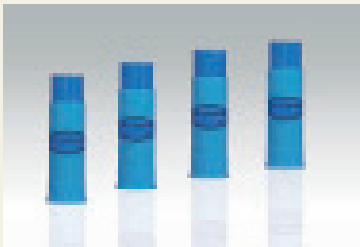
► General Description

The 38 mm Anti-riot Cartridge can be fired from 38 mm international Standard anti-riot gun, mainly used for dispersing riot crowds and maintaining social stability.

► Principal Data

| | |
|--|---|
| <u>Diameter</u> | 38 mm |
| <u>Length</u> | ≤ 122.5 mm |
| <u>Weight</u> | ≤ 135 g |
| <u>Max. Range</u> | ≥ 120 m |
| <u>Ground Dispersion at Max. Range</u> | Ex × Ez ≤ 8 m × 6 m |
| <u>Effective Area</u> | under appropriate climate, the effective area within 1 minute from detonation is more than 300 m ² |
| <u>Storage Time</u> | ≥ 5 years |
| <u>Applicable Temperature</u> | -30 ~ +45 °C |
| <u>Quantity</u> | 50 round/case |
| <u>Weight</u> | 18 kg/case |
| <u>Package Size</u> | 685 × 366 × 221 mm |

38mm Cluster Tear Gas Cartridge



► General Description

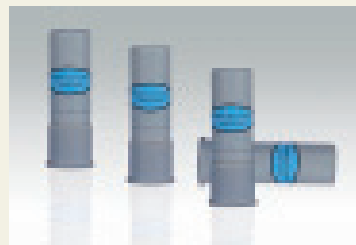
The 38 mm Cluster Tear Gas Cartridge is an anti-riot non-lethal ammunition launched by 38 mm anti-riot gun, it is mainly used for dispersing violent crowds and rioters to defend and maintain social order.

► Principal Data

| | |
|-----------------------------------|--|
| <u>Diameter</u> | 38 mm |
| <u>Single Grenade Length</u> | ≤ 160 mm |
| <u>Weight</u> | ≤ 175 g |
| <u>Max. Range</u> | ≥ 80 m |
| <u>Delays Time</u> | 1.5 ± 0.5 s |
| <u>Range</u> | 40 ~ 80 m |
| <u>Single Smoke Emission Time</u> | ≤ 20 s (normal temperature) |
| <u>Canister Number</u> | 3 |
| <u>Ground Dispersion</u> | under normal temperature, radius of 3 bullets spread center at max range $R_{100} \leq 15m$ |
| <u>Safety Fall Highness</u> | 3 m |
| <u>Chemical Casualty Area</u> | under appropriate climate ,the effective area within 1 minute from detonation is more than 600 m². |
| <u>Temperature Range</u> | -30 ~ +45 ℃ |
| <u>Storage Time</u> | ≥ 5 years |
| <u>Quantity</u> | 50 round/case |
| <u>Weight</u> | 20 kg/case |
| <u>Package Size</u> | 685 × 366 × 251 mm |

38mm Grenade Series

38mm Gun-fired and Hand-throwing Color Smoke Cartridge



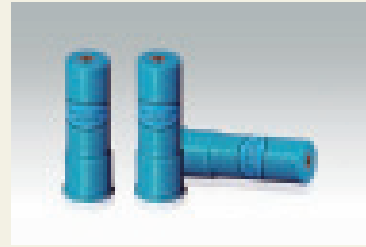
► General Description

The 38 mm Gun-fired and Hand-throwing Color Smoke Cartridge can be fired by 38 mm international standard anti-riot gun. It is mainly used for training. It can also be thrown by hand at a close range.

► Principal Data

| | |
|------------------------|--------------------|
| Diameter | 38 mm |
| Length | ≤ 122.5 mm |
| Weight | ≤ 148 g |
| Max. Range | ≥ 110 m |
| Delay Time | 2 ~ 3 s |
| Smoke Emission Time | ≤ 20 s |
| Safe Falling Height | ≥ 3 m |
| Applicable Temperature | -30 ~ +45 ℃ |
| Storage Time | ≥ 5 years |
| Quantity | 50 round/case |
| Weight | 18 kg/case |
| Package Size | 685 × 366 × 221 mm |

38mm Gun-fired and Hand-throwing Tear Gas Cartridge



► General Description

The 38mm Gun-fired and Hand-throwing Tear Gas Cartridge can be fired from 38 mm international Standard anti-riot gun, and also thrown by hand, mainly used for riot control, dispersing riot crowds and defeating criminal hiding in the building.

► Principal Data

| | |
|-------------------------|---|
| Diameter | 38 mm |
| Length | ≤ 122.5 mm |
| Weight | ≤ 148 g |
| Max. Range | ≥ 110 m |
| Delay Time | 2 ~ 3 s |
| Gas Emission Time | ≤ 20 s |
| Safe Falling Height | 3 m |
| Applicable Temperature | -30 ~ +45℃ |
| Storage Time | ≥ 5 years |
| Chemical Effective Area | under suitable weather conditions, the effective area within 1 minute of detonation is more than 150 m ² . |
| Packing | 50 round/case |
| Weight | 18 kg/case |
| Package Size | 685 × 366 × 221 mm |

38mm Grenade Series

38mm Gun-fired Color Smoke Cartridge



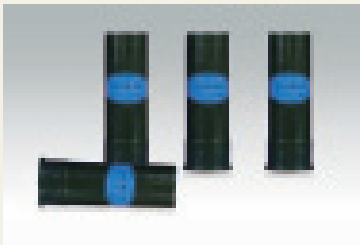
► General Description

The 38 mm Gun-fired Color Smoke Cartridge is mainly used for training. Its ballistic performance is same as 38 mm gun-fired smoke tear gas grenade. However, the grenade is filled with colored smoke agent, instead of CS agent.

► Principal Data

| | |
|---------------------------------|--|
| Diameter | 38 mm |
| Length | ≤ 122.5 mm |
| Weight | ≤ 135 g |
| Max. Range | ≥ 120 m |
| Ground Dispersion at Max. Range | $E_x \times E_z \leq 8 \text{ m} \times 6 \text{ m}$ |
| Ammunition Agent | colored smoke agent |
| Delay Time | 1.5 ± 0.5 s |
| Gas Emission Time | ≤ 20 s |
| Safe Falling Height | 3 m |
| Applicable Temperature | $-30 \sim +45^{\circ}\text{C}$ |
| Storage Time | ≥ 5 years |
| Packing | 50 round/case |
| Weight | 18 kg/case |
| Package Size | $685 \times 366 \times 221$ mm |

38mm Gun-fired Rubber Ball Cartridge



► General Description

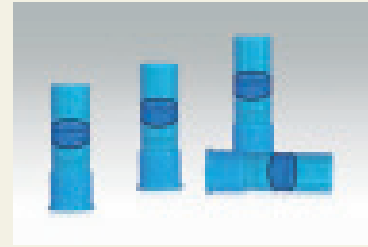
The 38 mm Gun-fired Rubber Ball Cartridge can be fired from 38 mm international Standard anti-riot gun. It is mainly used to disperse riot crowds and rioters within 30 m, disable armed criminal and rioters within 15 m. It can be used in non-combat situations as a non leathal ammunition with kinetic energy.

► Principal Data

| | |
|-----------------------|---|
| Diameter | 38 mm |
| Length | ≤ 122.5 mm |
| Weight | ≤ 110 g |
| Range | 5 ~ 30 m |
| Number of Rubber Ball | 21 |
| Power | 5 m: E Kinetic energy ≤ 27 J E than Kinetic energy ≤ 10 J/C m² 15 m: E Kinetic energy ≤ 4 J E than Kinetic energy ≤ 0.5 J/C m² |
| Hit Probability | Launched from fixed launcher, hit probability greater than 50% at 30 m distance on six piece human profile target |
| Safety Fall Highness | 3 m |
| Temperature Range | -30 ~ +45 |
| Storage Time | ≥ 5 years |
| Packing | 50 round/case |
| Weight | 18 kg/case |
| Package Size | 685 × 366 × 221 mm |

38mm Grenade Series

38mm Gun-fired Smoke Tear Gas Cartridge



► General Description

The 38mm Gun-fired Smoke Tear Gas Cartridge is a kind of smoke anti-riot ammunition launched from 38 mm anti-riot gun. It is mainly used to disperse riot crowds and rioters within 120 m, and to defeat criminals hiding in buildings within 30 m.

► Principal Data

Diameter

38 mm

Length

≤ 122.5 mm

Weight

≤ 135 g

Max. Range

≥ 120 m

Ground Dispersion at Max. Range

$Ex \times Ez \leq 8 \text{ m} \times 6 \text{ m}$

Chemical Effective Area

under suitable weather conditions, CS gas
effective area is 300 m^2 within 1 minute of
grenade detonation

Delay Time

1.5 ± 0.5 s

Gas Emission Time

≤ 20 s

Fall Highness

3 m

Temperature Range

$-30 \sim +45^\circ\text{C}$

Storage Time

≥ 5 years

48mm Grenade Series



48mm Grenade Series

48mm Color Smoke Grenade



► General Description

The 48 mm Color Smoke Grenade is mainly used for training. Its ballistical performance is the same as 48 mm smoke tear gas grenade, except that the charge is colored smoke instead of CS irritant agent.

► Principal Data

| | |
|-------------------------------|-------------|
| <u>Diameter</u> | 48 mm |
| <u>Length</u> | ≤ 110 mm |
| <u>Weight</u> | ≤ 160 g |
| <u>Safe Falling Height</u> | 3 m |
| <u>Gas Emmision Time</u> | ≤ 20 s |
| <u>Applicable Temperature</u> | -30 ~ +45 ℃ |
| <u>Storage Time</u> | ≥ 5 years |

48mm Explosive Deterrence Grenade



► General Description

The 48 mm Explosive Deterrence Grenade is mainly used to disperse riot crowds at a close range and defeat rioters hiding in the building.

► Principal Data

| | |
|------------------------|---|
| Diameter | 48 mm |
| Length | ≤ 110 mm |
| Weight | ≤ 160 g |
| Delay Time | 3.7 ± 0.5 s |
| Safe Falling Height | 3 m |
| Radius of Safety | ≤ 2 m |
| Sound Level | 160 ~ 170 dB at 5 m |
| Max. Range | ≥ 90 m |
| Applicable Weapon | fired from a cup fitted to 7.62 mm submachine gun type 56 with 7.62 mm blank cartridge |
| Applicable Temperature | - 30 ~ +45 °C |
| Storage Time | ≥ 5 years |

48mm Grenade Series

48mm Explosive Tear Gas Grenade



► General Description

The 48 mm Explosive Tear Gas Grenade is mainly used to disperse riot crowds at a close range and defeat rioters hiding in the building.

► Principal Data

| | |
|-------------------------|--|
| Diameter | 48 mm |
| Length | ≤ 110 mm |
| Weight | ≤ 160 g |
| Delay Time | 3.7 ± 0.5 s |
| Safe Falling Height | 3 m |
| Radius of Safety | ≤ 2 m |
| Chemical Effective Area | under appropriate weather condition, the effective area within 1 minute of grenade detonation is more than 300 m^2 |
| Applicable Temperature | $-30 \sim +45^{\circ}\text{C}$ |
| Storage Time | ≥ 5 years |

48mm Flash Grenade



► General Description

The 48 mm Flash Grenade is mainly used to disperse riot crowds at a close range and defeat rioters hiding in the building.

► Principal Data

| | |
|------------------------|---------------------------------------|
| Diameter | 48 mm |
| Length | ≤ 110 mm |
| Weight | ≤ 170 g |
| Delay Time | 3.7 ± 0.5 s |
| Safe Falling Height | 3 m |
| Radius of Safety | ≤ 2 m |
| Power | flash intensity 2,000 Mcd ~ 4,000 Mcd |
| Max. Range | ≥ 90 m |
| Applicable Temperature | $-30 \sim +45^{\circ}\text{C}$ |
| Storage Time | ≥ 5 years |

48mm Grenade Series

48mm Smoke Tear Gas Grenade



► General Description

The 48 mm Smoke Tear Gas Grenade is mainly used to disperse riot crowds at a close range and defeat rioters hiding in the building.

► Principal Data

| | |
|------------------------|--|
| Diameter | 48 mm |
| Length | ≤ 110 mm |
| Weight | ≤ 160 g |
| Safe Falling Height | 3 m |
| Gas Emission Time | ≤ 20 s |
| Effective Area | under appropriate climate, weather conditions the effective area within 1 minute of grenade detonation is more than 300 m ² |
| Applicable Temperature | -30 ~ +45℃ |
| Storage Time | ≥ 5 years |

48mm Rubber Ball Grenade



► General Description

The 48 mm Rubber Ball Grenade is a non-lethal anti-riot kinetic energy ammunition. It can be thrown by hand. At detonation, 200 small rubber balls are released toward the target with sufficient energy to cause pain in human body to disperse riot crowds and rioters.

► Principal Data

Diameter

48 mm

Length

≤ 125 mm

weight

≤ 215 g

Delay Time

3.2 ~ 4.2 s

Storage

should deposit in dry shady and ventilated
storage room, avoid direct sunlight, storage time
less than 5 years

48mm Grenade Series

48mm Plastic Toss Burning CS Tear Gas Grenade



► Principal Data

| | |
|-----------------------------------|----------------------|
| <u>Diameter</u> | 48 mm |
| <u>Length</u> | 87.5 mm |
| <u>Weight</u> | 126 ~ 130 g |
| <u>Storage Time</u> | 5 years |
| <u>Temperature of Application</u> | -30 ~ +45 °C |
| <u>Rapid Smoking Time</u> | 15 ~ 20 s |
| <u>Delayed-action Time</u> | 0.6 ~ 1 s |
| <u>Disabled Rate</u> | ≤ 4% |
| <u>Power Dimensionality</u> | ≥ 800 m ² |

48mm Plastic Toss Colorful Smoke Grenade



► Principal Data

| | |
|-----------------------------------|---|
| <u>Diameter</u> | 48 mm |
| <u>Length</u> | 87.5 mm |
| <u>Weight</u> | 120 ~ 130 g |
| <u>Storage Time</u> | 5 years |
| <u>Available Colors</u> | red/white/yellow/blue/green/orange/purple |
| <u>Temperature of Application</u> | -30 ~ +45 °C |
| <u>Rapid Smoking Time</u> | 15 ~ 20 s |
| <u>Disabled Rate</u> | ≤ 4% |

64mm Grenade Series



64mm Grenade Series

64mm Plastic Toss Burning CS Tear Gas Grenade



► Principal Data

| | |
|-----------------------------------|-----------------------|
| <u>Diameter</u> | 64 mm |
| <u>Length</u> | 128 mm |
| <u>Weight</u> | 385 ~ 390 g |
| <u>Storage Time</u> | 5 years |
| <u>Temperature of Application</u> | -30 ~ +45 °C |
| <u>Rapid Smoking Time</u> | 20 ~ 35 s |
| <u>Delayed-action Time</u> | 0.6 ~ 1 s |
| <u>Disabled Rate</u> | ≤ 4% |
| <u>Power Dimensionality</u> | ≥ 3200 m ² |

64mm Plastic Colorful Smoke Grenade



► Principal Data

| | |
|-----------------------------------|---|
| <u>Diameter</u> | 64 mm |
| <u>Length</u> | toss 128 mm electric 147 mm |
| <u>Weight</u> | 360 ~ 410 g |
| <u>Storage time</u> | 5 years |
| <u>Available Colors</u> | red/white/yellow/blue/green/orange/purple |
| <u>Temperature of application</u> | -30 ~ +45 °C |
| <u>Rapid smoking time</u> | 20 ~ 35 s |
| <u>Disabled rate</u> | ≤ 4% |
| <u>Ignition</u> | toss、 electric |